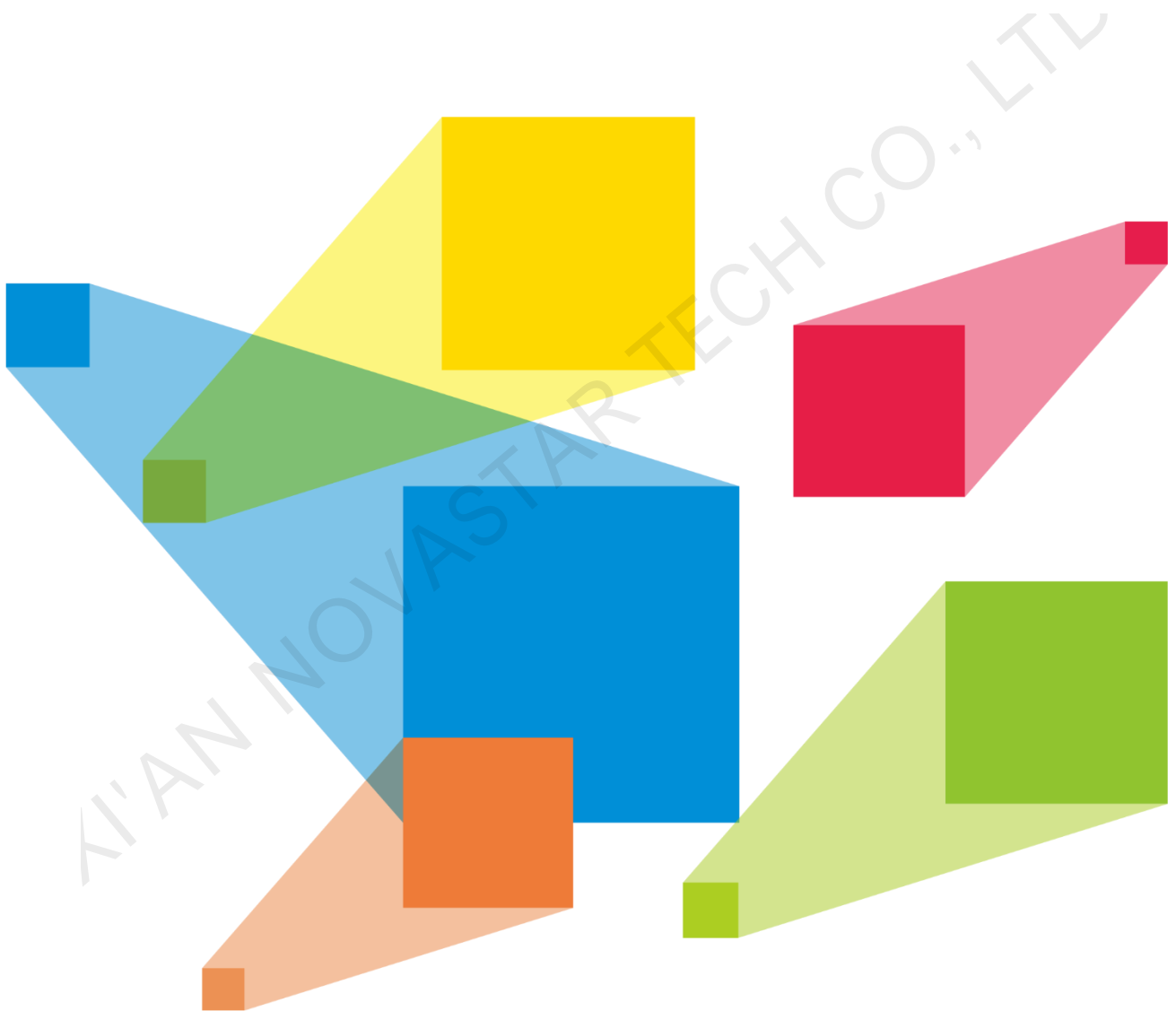


# H Series

## Video Wall Splicers

V1.3.0



User Manual

## Change History

Document Version	Release Date	Description
V1.3.0	2020-11-30	<ul style="list-style-type: none"> <li>• Added the descriptions for the following new features on Web page:               <ul style="list-style-type: none"> <li>– Added the video tutorials on the Help page.</li> <li>– Added the preset overwriting function.</li> <li>– Added the limited to full function for input source color range.</li> <li>– Added the 3D mode configuration.</li> </ul> </li> <li>• Added the descriptions for the following improvements:               <ul style="list-style-type: none"> <li>– Optimized the OSD configuration.</li> <li>– Optimized the IPC configuration.</li> </ul> </li> </ul>
V1.2.0	2020-09-04	<ul style="list-style-type: none"> <li>• Added the description for simultaneous language switching for both the device front panel menu and Web page.</li> <li>• Added the description for HDR settings on the Web page.</li> <li>• Added the description for the H_20xRJ45 sending card.</li> </ul>
V1.1.0	2020-07-31	<ul style="list-style-type: none"> <li>• Added the descriptions for the following new functions:               <ul style="list-style-type: none"> <li>– Eye saver mode on Web page</li> <li>– 3D function</li> <li>– Input source grouping</li> </ul> </li> <li>• Optimized the screen configuration operations.</li> </ul>
V1.0.0	2020-05-15	First release

# Contents

Change History .....	i
1 Device Connections .....	1
1.1 Input Cards .....	1
1.2 Output Card .....	1
1.3 Power Supply .....	2
1.4 Control Card .....	2
1.5 Preview Card .....	3
2 Device Login .....	4
2.1 Power On/Off .....	4
2.2 Web Page Login .....	4
3 Screen Configuration .....	6
4 Basic Operations .....	9
4.1 Adding Layers .....	9
4.2 Adding BKG .....	11
4.3 Adding OSD .....	12
4.4 Setting Presets .....	14
4.5 Setting Preset Playbacks .....	16
4.6 Grouping Input Sources .....	18
4.7 Cropping Input Sources .....	19
4.8 Setting 3D Effect .....	21
4.9 Setting Channel Logos .....	23
4.10 Setting Input and Output EDID .....	25
4.11 Managing Users .....	26
5 LCD Menu Introduction .....	29
5.1 Device .....	29
5.2 Multiviewer .....	29
5.3 Settings .....	30
5.3.1 Communication Settings .....	30
5.3.2 Firmware Version .....	31
5.3.3 Advanced Settings .....	32
5.4 Language .....	34
5.5 About Us .....	35
6 Web Introduction .....	36
6.1 Screen Configuration .....	36
6.2 Programming .....	40
6.3 Multiviewer .....	41
6.4 Device .....	42
6.5 Settings .....	44
6.5.1 EDID Management .....	44
6.5.2 IPC Management .....	45
6.5.3 User Management .....	52
6.5.4 Backup Management .....	52
6.5.5 Communication Settings .....	53
6.5.6 Firmware Update .....	54
6.5.7 Reset Settings .....	54
6.5.8 Other Settings .....	55
6.5.9 Help .....	56
6.5.10 About Us .....	57

# 1 Device Connections

## 1.1 Input Cards

The H series supports a variety of input sources. Connect the input sources to the matched input card connectors.

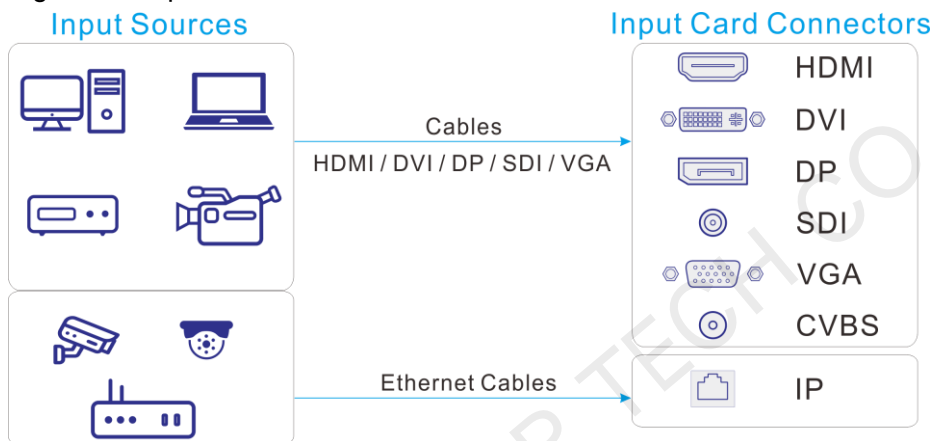
- DVI, HDMI, SDI, CVBS, VGA or DP input sources

Connect the input sources to the matched input card connectors using corresponding cables or converter cables.

- IP camera sources

Connect the input source to the Ethernet port of the H\_2xRJ45 IP input card using an Ethernet cable.

Figure 1-1 Input card connection



## 1.2 Output Card

The H series provides two kinds of LED 4K sending cards: H\_16xRJ45+2xfiber sending card and H\_20xRJ45 sending card.

When the H\_16xRJ45+2xfiber sending card is used for output, the OPT ports copy the outputs on the Ethernet ports. OPT 1 copies and outputs the data on Ethernet ports 1–8. OPT 2 copies and outputs the data on Ethernet ports 9–16.

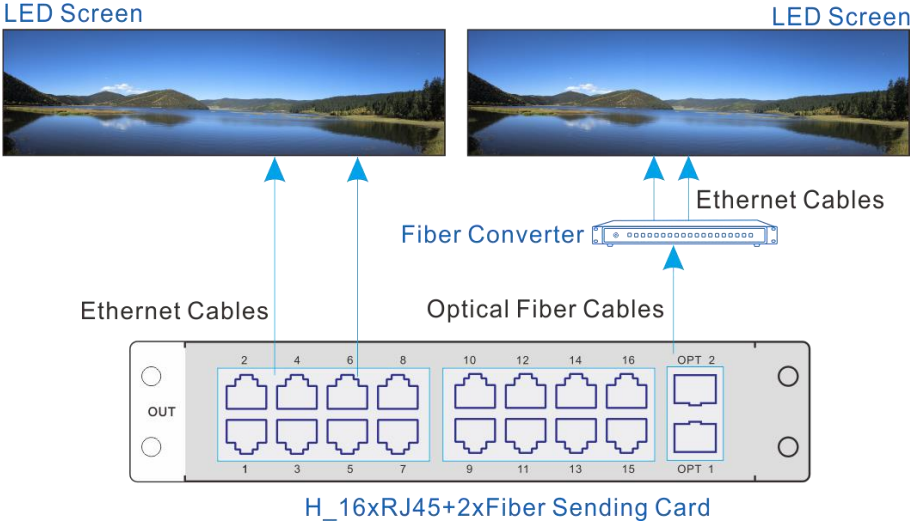
- Via Ethernet port

Connect the Ethernet ports directly to the LED screen based on the screen structure.

- Via OPT port

OPT ports are used for long-distance transmission. Connect the OPT ports to a fiber converter firstly, and then connect the fiber converter to the LED screen.

Figure 1-2 LED 4K sending card connection



**Note:**  
 The H\_20xRJ45 sending card is connected and configured in the same way as the H\_16xRJ45+2xfiber sending card.

### 1.3 Power Supply

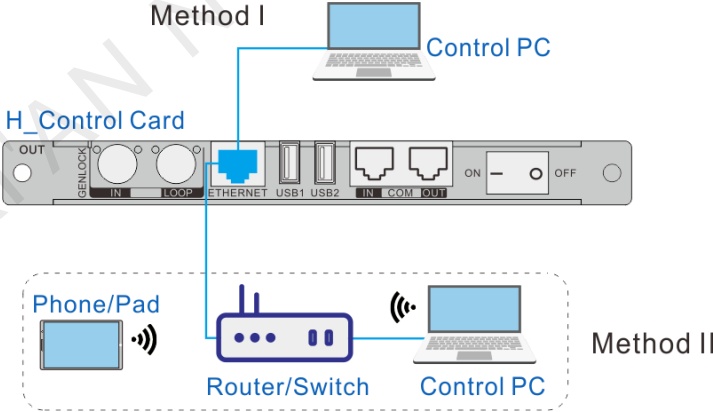
Connect the power connector on the rear panel to the electrical outlet using the supplied power cord.

### 1.4 Control Card

You can control the H series devices on a control PC through either of the following two methods.

- Method I: Direct control for single-user control  
 Connect the device Ethernet port to the control PC.
- Method II: Using a router or switch, for multiple user collaboration in a wired or wireless way  
 Connect the Ethernet ports of both the device and control PC to the router or switch.

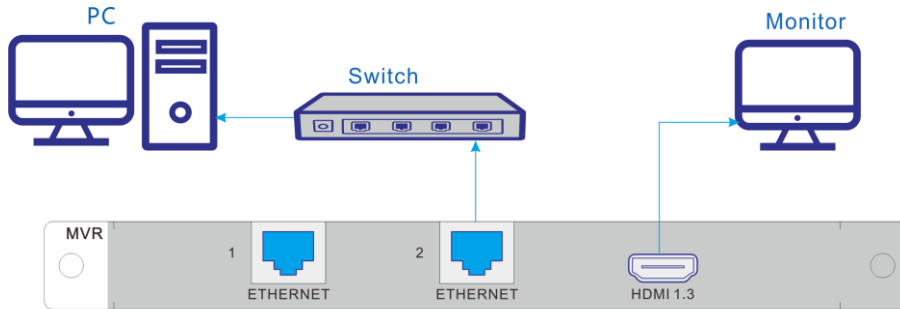
Figure 1-3 Control card connection



## 1.5 Preview Card

The H series allows you to monitor the inputs and outputs on a PC or monitor.

Figure 1-4 Preview card connection



H\_2×RJ45+1×HDMI 1.3 preview card

- Via Ethernet port:  
Connect one of the Ethernet ports on the preview card and the Ethernet port of the control card to the same switch for the input source and screen monitoring on the Web page.
- Via HDMI connector:  
Connect the HDMI connector of the preview card to a monitor for on-site monitoring.

## 2 Device Login

### 2.1 Power On/Off

The power switch is on the H\_Control card.

Figure 2-1 Control card



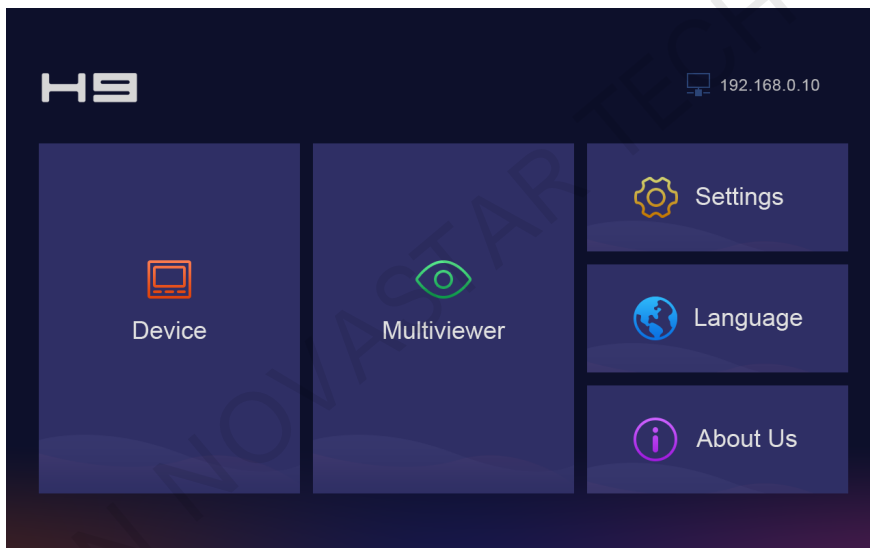
- – / On: Power on the device.
- O / Off: Power off the device.

#### Power on

Connect the power cord, and then set the rocker switch to **ON**. The home screen is displayed as follows after successfully powered on.

The device IP address is displayed at the top right on the home screen. The default IP address is 192.168.0.10.

Figure 2-2 Home screen



#### Power off

Set the rocker switch to **OFF**, and then disconnect the power cord if necessary.

### 2.2 Web Page Login

#### Prerequisites

- You have completed the connection as described in 1.4 Control Card.
- You have obtained the login user name and password. The default user name and password are "admin".

#### Notes

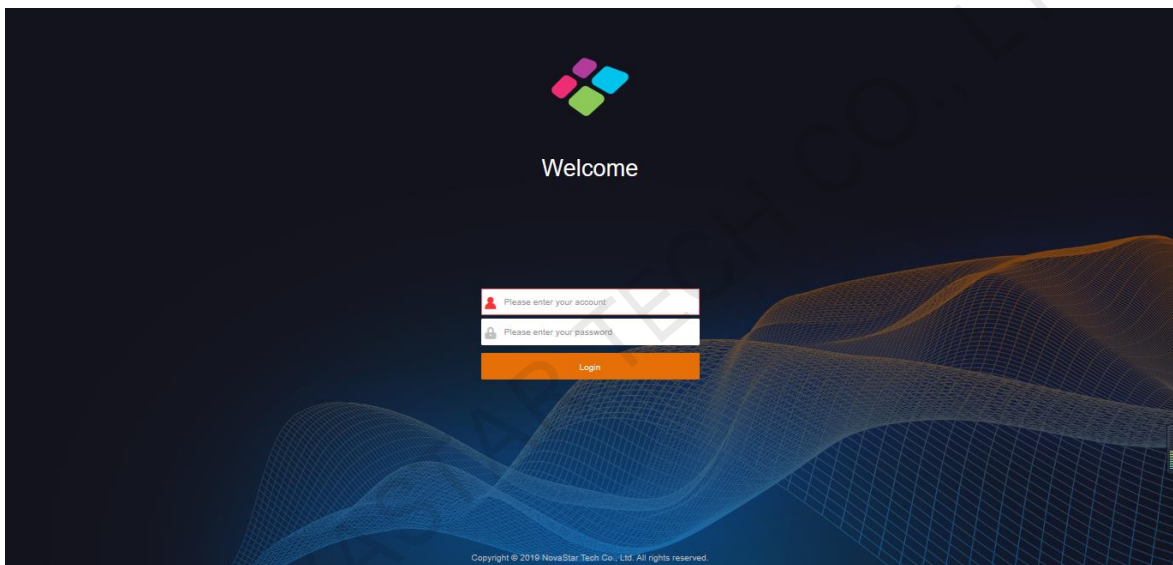
- When an H series device is connected directly to a control PC, the device and control PC must be on the same network segment and their IP addresses cannot conflict. For example, if the device IP address is 192.168.0.10, the IP address of the control PC must be 192.168.0.X and X cannot be 10.

- When an H series device is connected to a control PC using a router or switch, you must set to automatically get the IP address, and select **Obtain an IP address automatically** for the network settings on the control PC.
  - a. Go to **Settings** > **Communication** from the home screen to enter the network settings screen.
  - b. Click the **IP Settings** tab to enter the IP settings screen.
  - c. Set the mode to **Automatic**.
  - d. Click **Main** at the top left to return to the home screen and the current device IP address appears at the top right.
  - e. Select **Obtain an IP address automatically** on the Internet protocol properties window on the control PC. The router or switch will assign the IP addresses to the device and control PC automatically.

## Operating Procedure

- Step 1 Open the suggested web browser on your computer, enter the device IP address in the address bar, and then press **Enter** to jump to the login interface for the Web page for the H series devices.

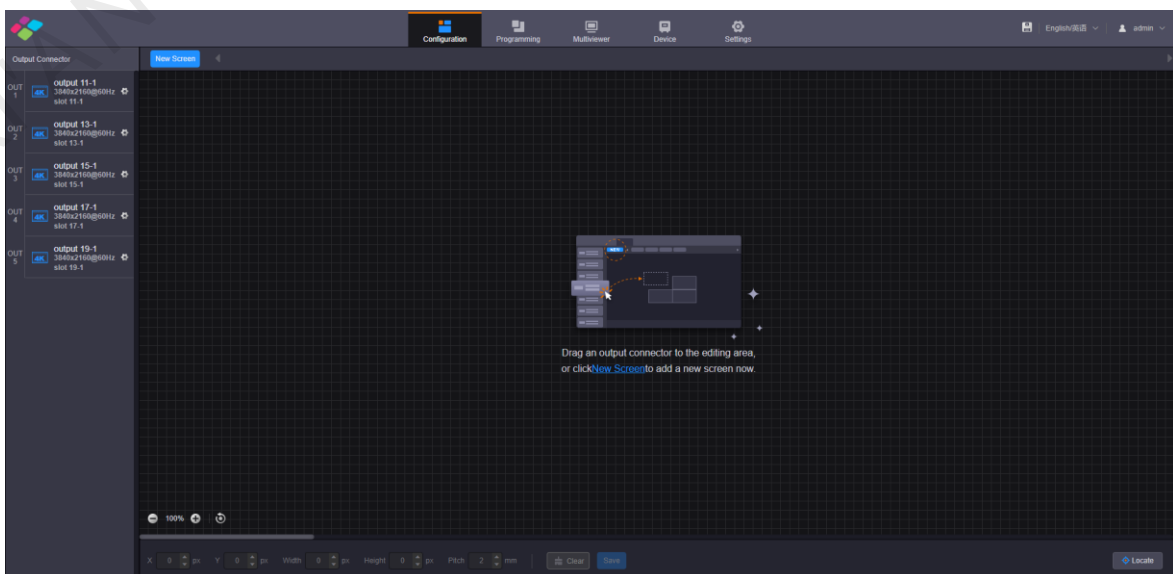
Figure 2-3 Web login page



- Step 2 Enter the user name and password, and click **Login** to log in to the Web page.

The default user name and password are both "admin".

Figure 2-4 Web page after login







## 3 Screen Configuration

Configure the screen based on the structure and data flow of the screen loaded by the current device. Associating the screen with the outputs will make it convenient for you to control the screen by area.

The H\_16xRJ45+2xfiber sending card or H\_20xRJ45 sending card is represented by a virtual 4K connector on the configuration page.

- For the H\_16xRJ45+2xfiber sending card, an icon  is displayed.
- For the H\_20xRJ45 sending card, an icon  is displayed.

---

### Note:

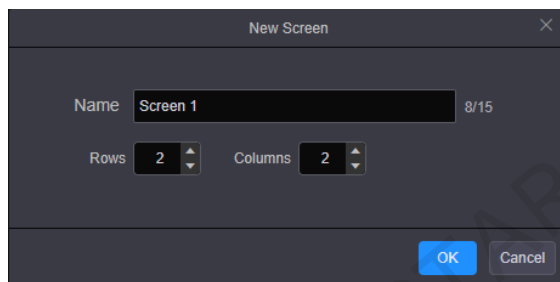
The H\_16xRJ45+2xfiber sending card and H\_20xRJ45 sending card can be configured on the same screen when they have the same frame rate.

---

### Web Operations

- Step 1 Select **Configuration** to enter the screen configuration page.
- Step 2 Click **New Screen** at the top to pop up the **New Screen** window.


Figure 3-1 New screen




- Step 3 Enter a screen name. You can name the screen according to its location or input, which is easier for you to identify the screen quickly and precisely when operating the layers, presets and so on.
- Step 4 Set the quantities of the rows and columns based on the screen structure.
- Step 5 Select the desired output card to load the screen, and then click and drag the sending card to the screen.

---

### Notes:

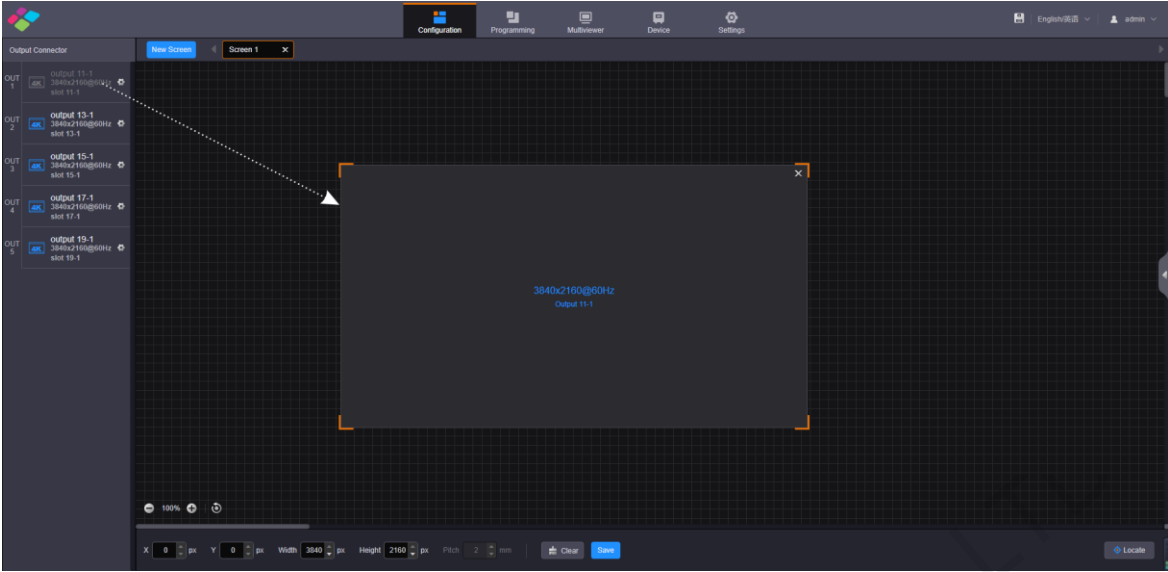
When the output card is H\_16xRJ45+2xfiber sending card, a virtual 4K video output connector  is displayed on the configuration page.

When the output card is H\_20xRJ45 sending card, a virtual 4K video output connector  is displayed on the configuration page.

It is recommended you go to **Settings > EDID Management > Output** to set the output resolution and frame rate first when you use the H\_16xRJ45+2xfiber sending card or H\_20xRJ45 sending card.

---

Figure 3-2 LED screen configuration



- Highlighted connector: The output connector is not used by the screen.
- Gray connector: The output connector is used by the screen and cannot be used repeatedly.

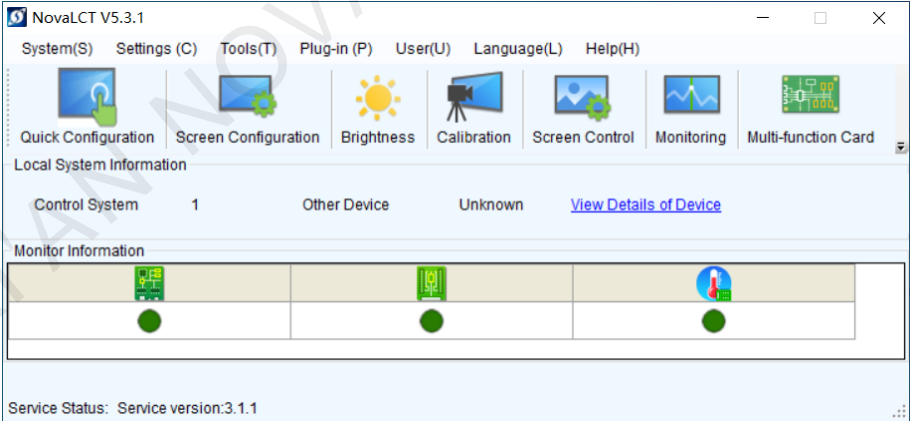
Step 6 Click **Save** to save the screen settings.

**NovalCT Operations**

**Note:**  
 When the H\_16xRJ45+2xfiber sending card or H\_20xRJ45 sending card is used, you must configure the screen in NovaLCT.

Step 1 Go to **User > Advanced Synchronous System User Login**. Enter the password and click **Login**. The default password is "admin".

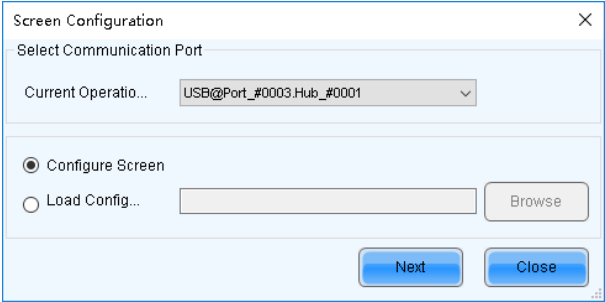
Figure 3-3 NovaLCT (logged in)



Step 2 On the menu bar, go to **Settings > Screen Configuration** to pop up the **Screen Configuration** window.

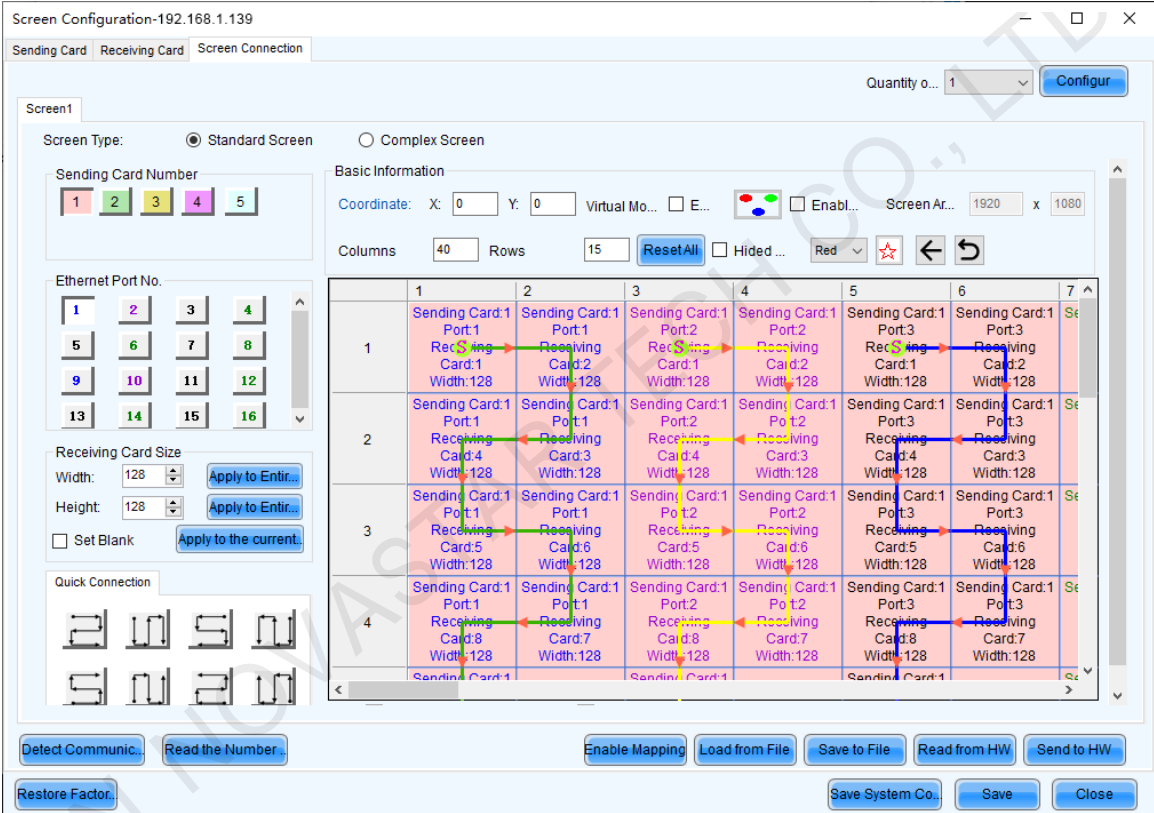
Step 3 Select a communication port and click **Next**.

Figure 3-4 Selecting a communication port



- Step 4 Select the **Sending Card** tab to select the desired input sources and click **Send**.
- Step 5 Select the **Screen Connection** tab to show the screen configuration settings.

Figure 3-5 Screen configuration



- Step 6 Click the drop-down arrow next to **Quantity o...** on the top right to set the screen quantity and then click **Configure**. You can also increase or decrease screen quantity here.
- Step 7 Select the sending card number which indicates the sequence number of the installed H\_16xRJ45+2xfiber sending cards. The sending cards are numbered from left to right.
- Step 8 Set the column and row quantities of receiving cards, as well as the receiving card size (loading capacity) based on the current screen structure.
- Step 9 Select the Ethernet port number and draw lines between cabinets based on the cabinet connection and the connection mode between the device and screen.
- Step 10 After the settings, click **Send to HW** to complete the screen configuration.

**Notes:**

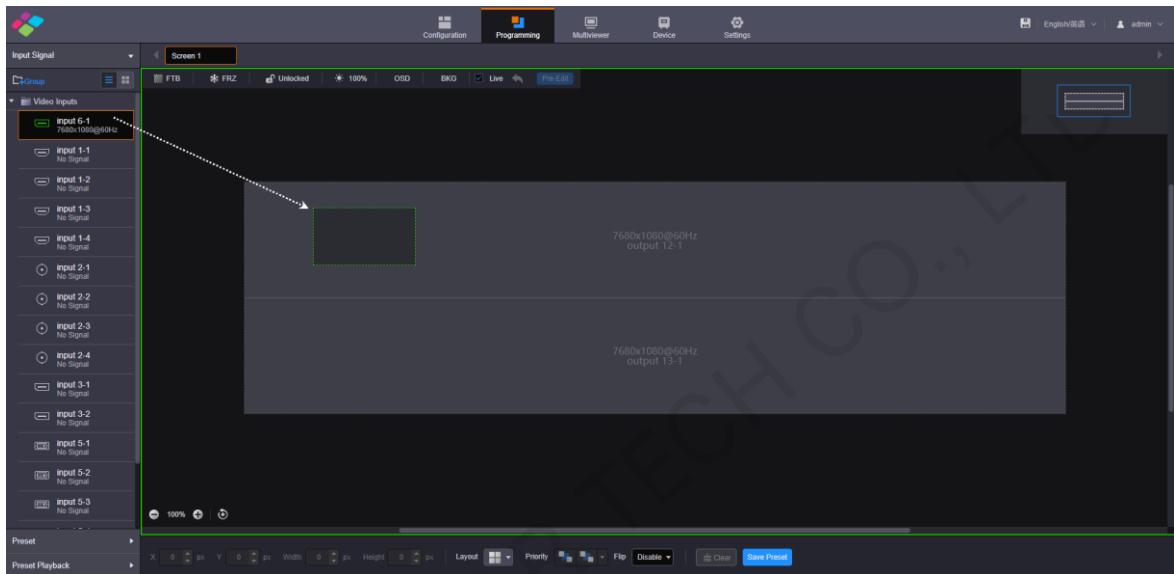
If some receiving cards are left blank, please cancel the connection of those cards according to on-site configuration.  
 For configuration for irregular screens, please refer to the NovaLCT User Manual.  
 For configuration for common and irregular screens, you can also use SmartLCT software from NovaStar. For detailed information, please refer to the SmartLCT User Manual.

## 4 Basic Operations

### 4.1 Adding Layers

- Step 1 Click **Programming** to enter the layer editing page.
- Step 2 On top of the **Programming** page, select the screen that you will operate.
- Step 3 Click an input in the **Input Signal** area on the left and drag it to the editing area to add a layer.

Figure 4-1 Adding layers









#### Note:

If you have grouped the input sources, you need to expand the group and drag the desired input source to the layer.

### Adjusting Layers

Click the layer and you can perform the following operations.

- Adjust the layer size.
  - Quick adjustment: Click the small square on the layer edge, and drag the square when the cursor turns to a double-sided arrow to quickly adjust the layer size.
  - Precise adjustment: Enter specific numbers in the Width and Height text boxes below the layer editing area to precisely adjust the layer size.
- Adjust the layer position.
  - Quick adjustment: Click and drag the layer to quickly move the layer.
  - Precise adjustment: Enter specific numbers in the X and Y text boxes below the layer editing area to precisely position the layer. The adjustment reference is the top left corner of the layer. If the X and Y values are both 0, the layer's top left corner locates at the top left corner of the screen.
- Lock or unlock the layer by clicking  or  at the top right corner of the layer.
- Freeze or unfreeze the layer by clicking .
- Start or stop the layer playback on the Web page by clicking  / .
- When there are multiple overlapping layers, you can adjust the layer priorities.
  - : Bring the selected layer to the front, and the layer image will be displayed completely.







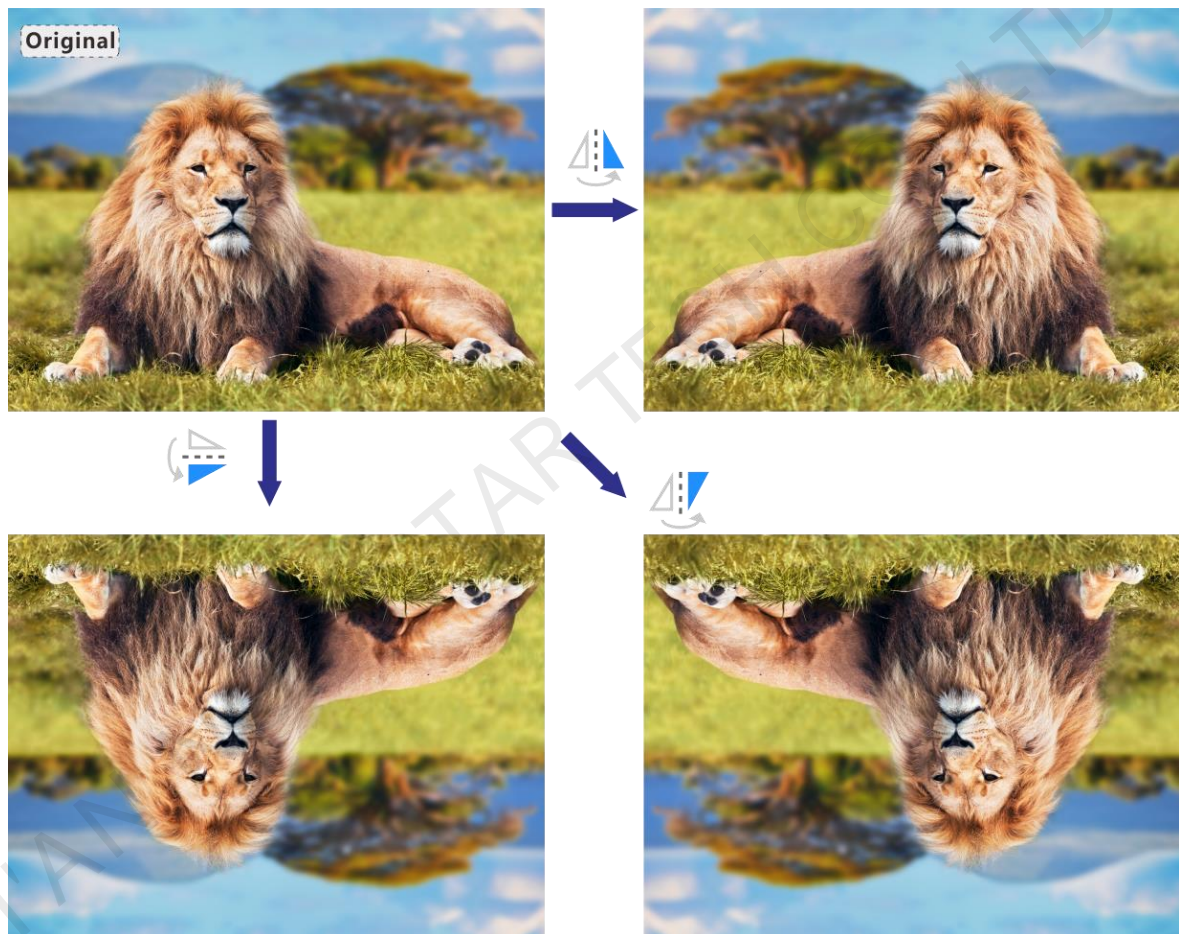
- : Send the selected layer to the back, and the layer will be partially covered by other overlapping layers.
- : Bring the selected layer forward.
- : Send the selected layer backward.
- Set whether to flip the layer image. Three options are provided as follows.
  - Disable: Do not flip the layer image.
  - : Flip the layer image horizontally.
  - : Flip the layer image vertically.
  - : Flip the layer image horizontally and vertically.

Figure 4-2 Layer flipping



- Click **Layout** to add and arrange multiple layers, and then all the added layers will fill the whole screen according to the layout you selected. The layout options are 2x2, 3x3 and 4x4.
- Click **Clear** to quickly clear all the added layers.

### Taking to Screen

There are two taking to screen modes: **Live** and **Pre-Edit**.

- Live (default): The layer editing process is displayed on the screen in real time.

Figure 4-3 Live more





- **Pre-Edit:** Deselect **Live**, and the layer editing process will not be displayed on the screen in real time. Click **Pre-Edit** after the layer editing is completed, and the screen will display the layer.

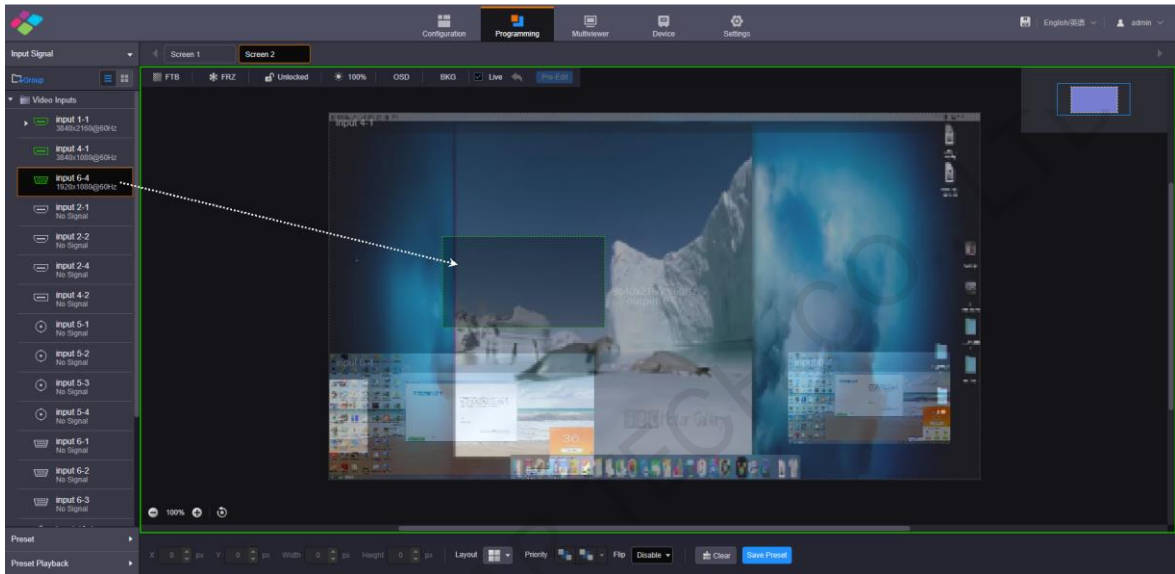
Figure 4-4 Pre-edit mode



## Switching Layer Input Sources

Click an input in the **Input Signal** area on the left and drag it to an added layer to quickly switch the layer input source. The layer size and position remain the same.

Figure 4-5 Switching layer input sources



## 4.2 Adding BKG

Make sure you have imported the BKG files before you add a BKG. The added BKG fills the whole screen automatically and locates at the bottom layer. The size and priority of the BKG cannot be adjusted.

### Importing BKG

- Step 1 On the **Programming** page, click **BKG** below the screen list area to expand the BKG settings pane.

Figure 4-6 Importing BKG



Step 2 Click **Add** to pop up the window where you can select and add a BKG file.

Step 3 Select the desired file and click **Open** to add it to the BKG list.

### Adding BKG

Step 1 On the BKG settings pane, select the desired BKG image.

Step 2 Check the box next to **Enable** to turn on the BKG function.

The system will use the selected image as background automatically.

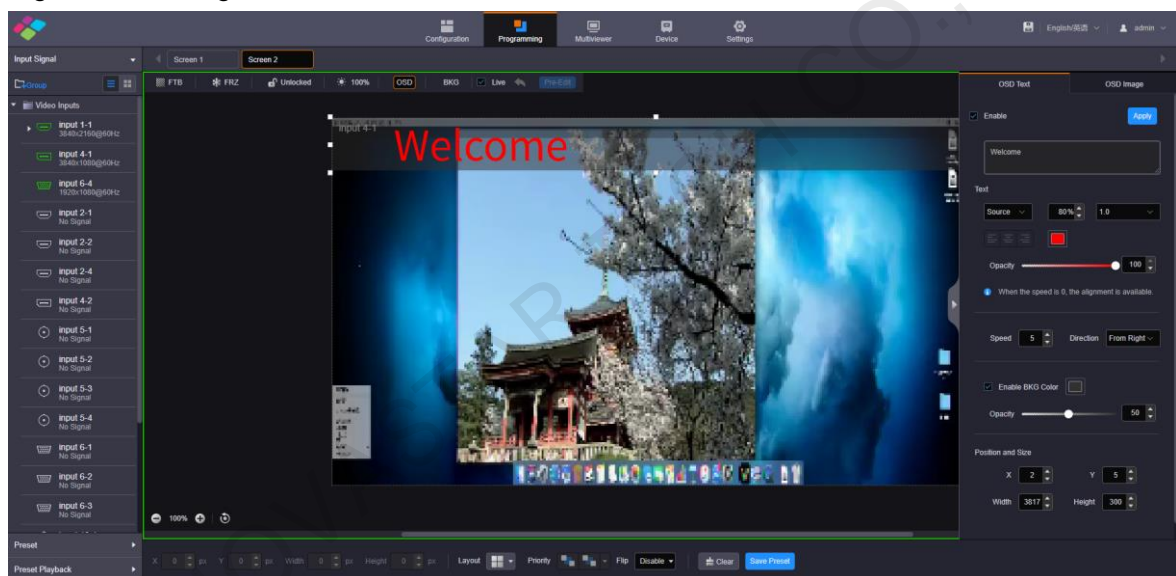
#### Note:

Click another image in the BKG list to replace the current BKG.

## 4.3 Adding OSD

The H series supports both OSD text and OSD image settings. OSD text supports scrolling. On the **Programming** page, click **OSD** below the screen list area to expand the OSD settings pane.

Figure 4-7 Adding OSD



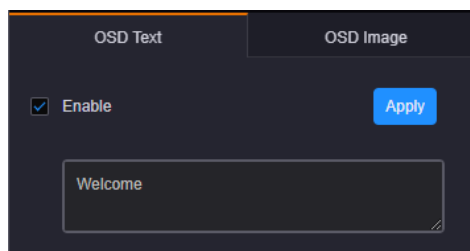
### OSD Text

Step 1 Click the **OSD Text** tab to show the OSD text settings.

Step 2 Check the box next to **Enable** to turn on the OSD text settings.

Step 3 In the text box below **Enable**, enter the OSD text content.




Figure 4-8 OSD text box



Step 4 Set the OSD text properties.

Figure 4-9 OSD text properties



- Set the text font.  
From the left drop-down list below **Text**, select the desired text font.
- Set the text size.  
In the middle text box below **Text**, set the font size. The text size is shown in percentage that indicates the ratio of the text size to the text position height.
- Set the text spacing.  
From the right drop-down list below **Text**, set the spacing between two letters or characters.
- Set the text color.  
Click the color block icon below **Text** to select an existing color or enter the RGB values to define a custom color in the window that appears. After the settings, click OK to apply the color.
- Set the text alignment method.  
When the text is static which means the text scrolling speed is set to 0, the alignment item is available. Three alignment options are provided.
  -  (Align left): Align the text content with the left margin of the OSD area.
  -  (Center): Center the text content in the OSD area.
  -  (Align right): Align the text content with the right margin of the OSD area.
- Set the opacity of the OSD text.  
The opacity ranges from 0% (totally transparent) to 100% (nontransparent).  
You can change the opacity in the following three ways.
  - Drag the opacity slider.
  - Click the up or down arrow button next to the text box.
  - Enter an opacity value in the text box.

Step 5 Set the OSD text scrolling properties.

- Speed: Set the scrolling speed. The value ranges from 0 (static) to 10 (fastest).
- Direction: Set the scrolling direction. The options are **From Right (default)** and **From Left**.

Step 6 Set the background color of the OSD text.

1. Check the box next to **Enable BKG Color** to turn on the background for OSD text.
2. Click the color block icon next to **Enable BKG Color** to pop up a window where you can select or custom colors.
3. Select an existing color or enter the RGB values to define a custom color in the displayed window.
4. Click **OK** to complete the settings.
5. Set the opacity for the OSD background.

Step 7 Set the OSD position and size.

- Position:
  - X: Set the horizontal distance from the top left corner of the OSD to that of the screen.



- Y: Set the vertical distance from the top left corner of the OSD to that of the screen.
  - Size:
    - Width: Set the OSD area width.
    - Height: Set the OSD area height.
- Step 8 Click **Apply** at the top right corner of the OSD settings pane to complete the OSD text settings and display the OSD text on the screen.

## OSD Image

- Step 1 Click the **OSD Image** tab to show the OSD image settings.
- Step 2 Check the box next to **Enable** to turn on the OSD image settings.
- Step 3 Click **Upload** to pop up a window where you can select the desired OSD images.
- Step 4 Click **Open** to upload the selected images.
- Step 5 Set the OSD image properties.
- X: Set the horizontal initial position of the OSD image.
  - Y: Set the vertical initial position of the OSD image.
  - Width: Set the width of the OSD image.
  - Height: Set the height of the OSD image.
  - Opacity: Set the opacity of the OSD image.
- Step 6 Click **Apply** at the top right corner of the OSD settings pane to complete the OSD image settings and display the OSD image on the screen.

---

### Notes:

After an OSD image is applied, you can click **Upload** and select a new image to replace the current one.  
 Click **Crop** to crop the added OSD image if necessary.  
 On the Web page, you can click and drag the OSD to quickly adjust its position.

---

## Deleting OSD

- Step 1 Select the **OSD Text** or **OSD Image** tab to expand the OSD text or image settings pane.
- Step 2 Uncheck the box next to **Enable**.
- Step 3 Click **Apply** to delete OSD.

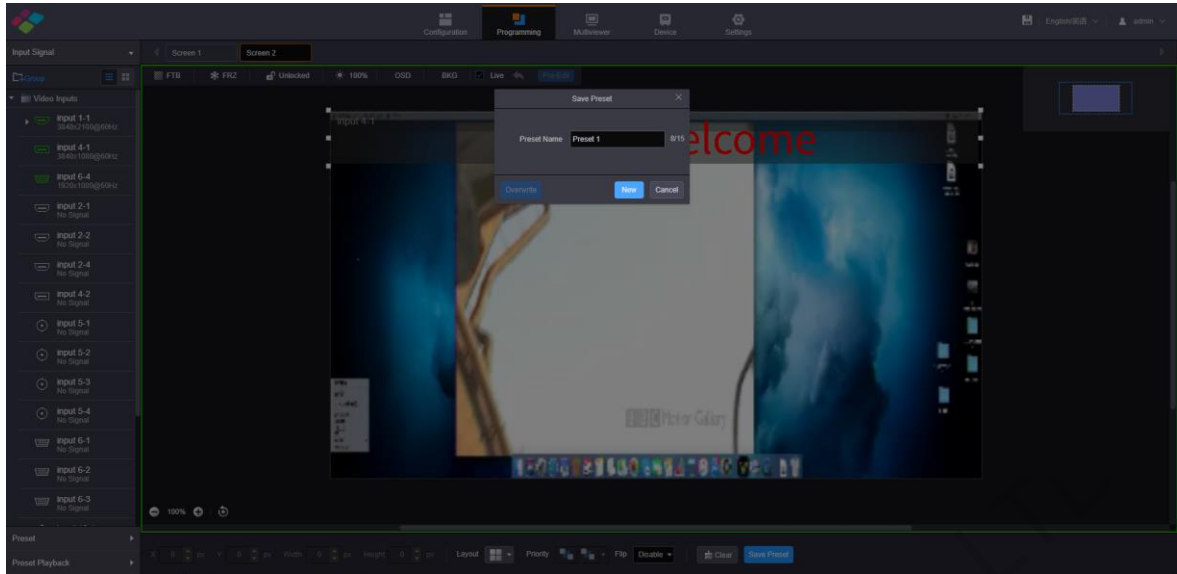
## 4.4 Setting Presets

After the layer settings, you can save the current layer layout and settings as a preset for future use.

### Saving Presets

- Step 1 On the **Programming** page, click **Save Preset** at the bottom to pop up the preset saving window.

Figure 4-10 Saving presets



Step 2 Enter a preset name which is easier for you to remember and identify the preset quickly.

Step 3 Click **New** to save the preset.

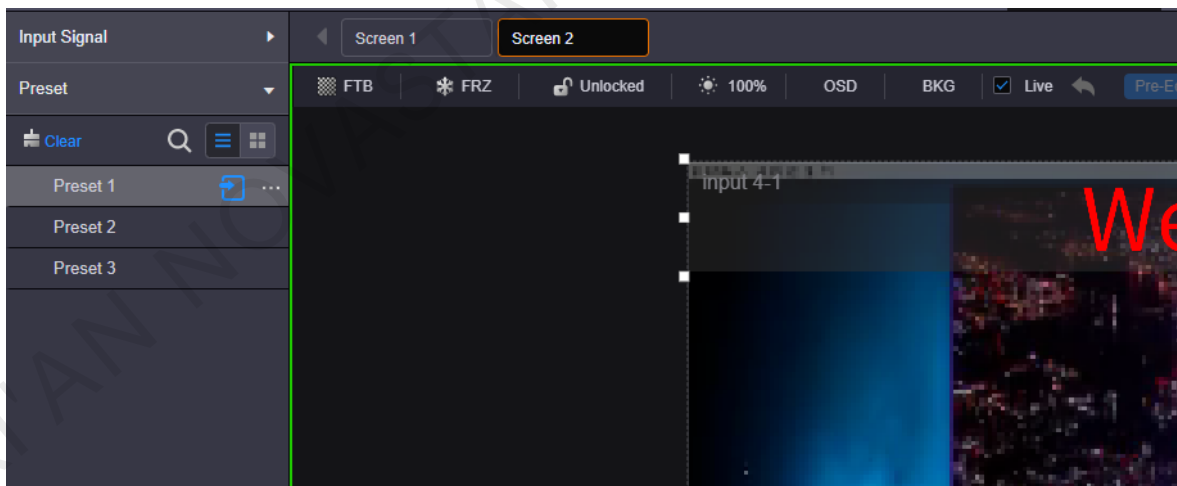
## Loading Presets





The preset is screen-specific, so select a configured screen before you load a preset.


Step 1 On top of the **Programming** page, select the screen that you will operate.

Step 2 Click **Preset** on the left to expand the preset list.

Figure 4-11 Loading presets



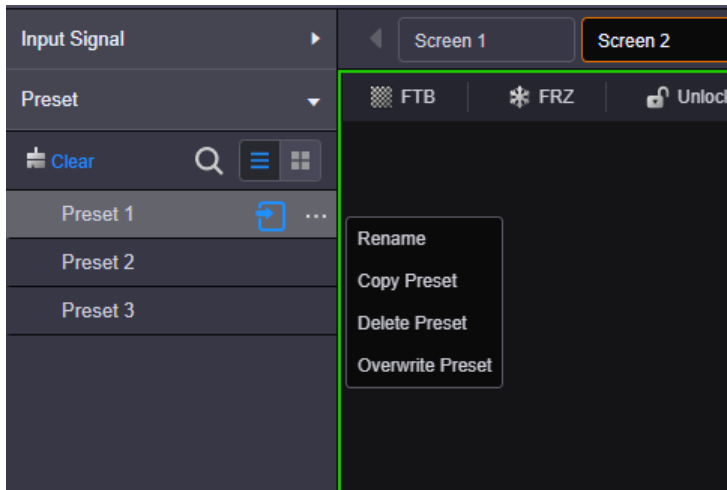
- Click  to search the presets by name.
- Click  to switch to the list view.
- Click  to switch to the thumbnail view that allows you to view the layer layout of the preset.
- Click  to clear all the presets.

Step 3 Click a preset and the  icon appears next to the preset name. Click this icon to load the current preset to the screen.

## Other Preset Operations

Click a preset and “...” appears next to the preset name. Click this icon to pop up the preset operations menu.

Figure 4-12 Preset operations menu



- **Rename:** Rename the saved preset.
- **Copy Preset:** Copy the layer layout and content in the current preset to a new preset.
- **Delete Preset:** Delete the selected preset.
- **Overwrite Preset:** Overwrite the selected preset with a new preset.

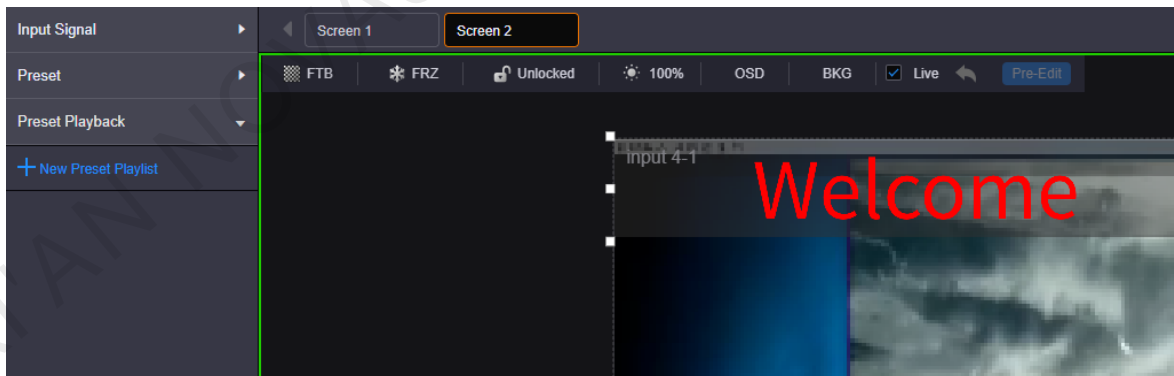
## 4.5 Setting Preset Playbacks

The preset playback function allows you to play the presets automatically based on the set playback sequence and single preset playback duration. After the settings, the system will play the presets automatically with no manual operations required.

### Adding Preset Playbacks

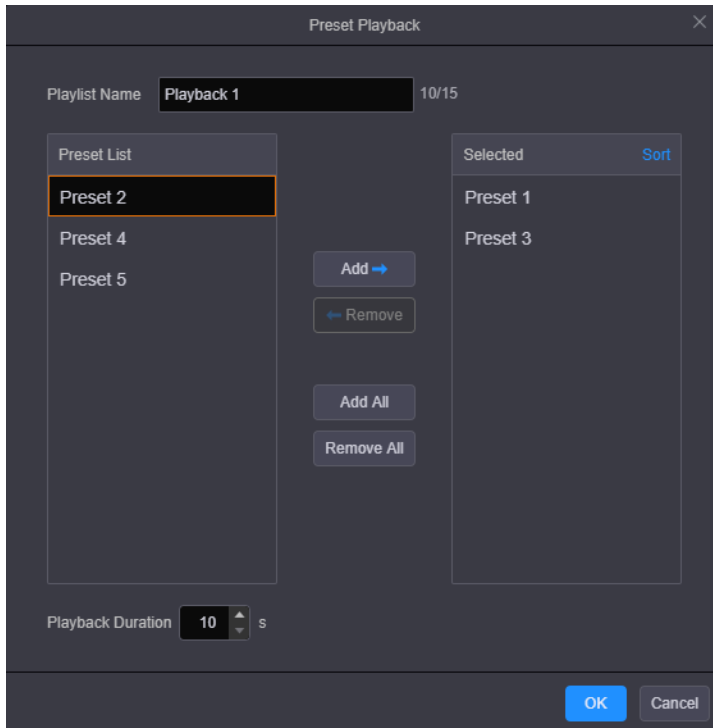
- Step 1 On the **Programming** page, click **Preset Playback** on the left to enter the playback settings page.

Figure 4-13 Adding preset playbacks - 1



- Step 2 On top of the page, select the screen that you will operate.
- Step 3 Click **New Preset Playlist** to add a new playback and enter the playback settings page.

Figure 4-14 Adding preset playbacks - 2



Step 4 Enter a name for the new playback.

Step 5 Select the desired presets in the **Preset List** area on the left, and then click **Add** to add the selected presets to the **Selected** area.

- Remove: Select the desired presets in the **Selected** area and click **Remove** to remove them from the list and make them go back to the left area.
- Add All: Add all the presets in **Preset List** to **Selected**.
- Remove All: Remove all the presets in **Selected**.

Step 6 Set the playback duration that specifies the time length each preset lasts.

Step 7 Click **OK** to complete the settings.

### Playing Presets

Step 1 On top of the **Programming** page, select the screen that you will operate.

Step 2 Click **Preset Playback** on the left to expand the preset playback list.


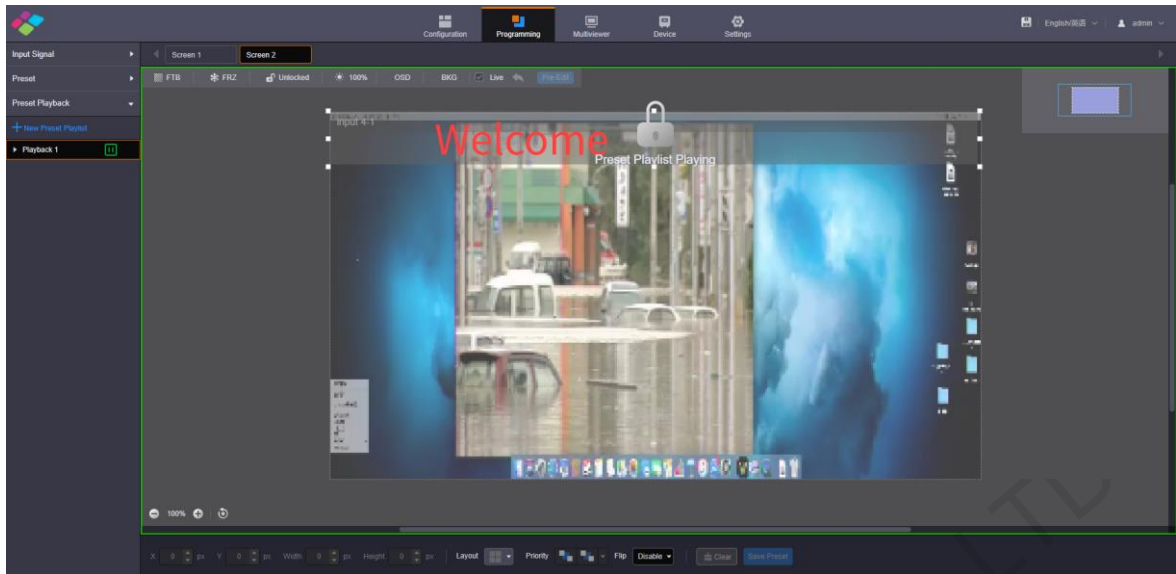

Step 3 Click the  icon to play the selected preset playlist. The screen is locked during the playback.

Figure 4-15 Playing presets

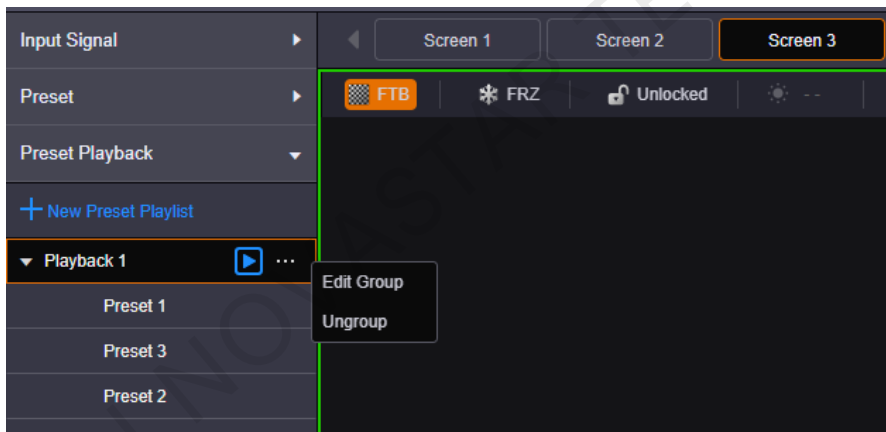


Click the  icon to pause the playback.

### Other Playback Operations

Click a playback and “...” appears next to the playback name. Click this icon to pop up the playback operations menu.

Figure 4-16 Playback operations menu



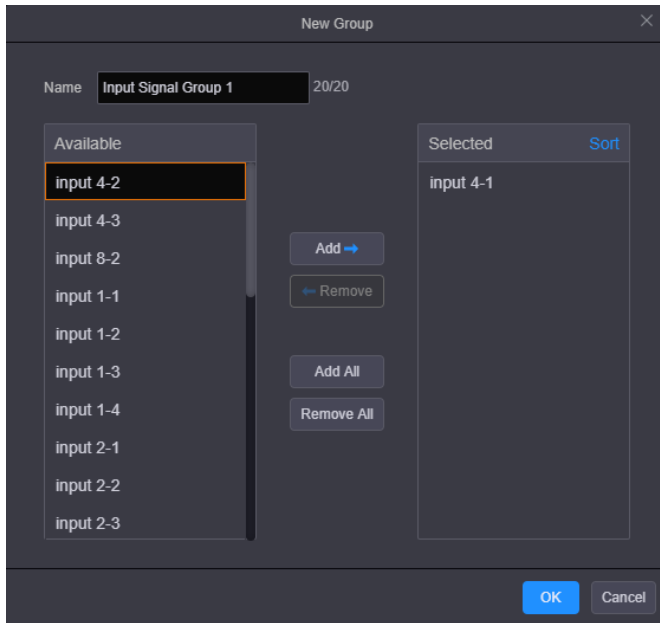
- Edit Group: Rearrange the preset list and readjust the playback duration.
- Ungroup: Ungroup the current playlist.

## 4.6 Grouping Input Sources

The H series supports input source group management.

- Step 1 On the **Programming** page, click **Input Signal** on the left to view the input source list. The green connectors are accessed with signal sources.
- Step 2 Click **Group** to pop up the grouping window.

Figure 4-17 Grouping input sources



Step 3 Enter a name for the group.

Step 4 Select the desired inputs in the **Available** area on the left.

Step 5 Click **Add** to add the selected inputs to the **Selected** area.

- Remove: Select the desired inputs in the **Selected** area and click **Remove** to remove them from the list and make them go back to the left area.
- Add All: Add all the inputs in **Available** to **Selected**.
- Remove All: Remove all the inputs in the **Selected** area.

Step 6 Click **OK** to complete the grouping.

## 4.7 Cropping Input Sources

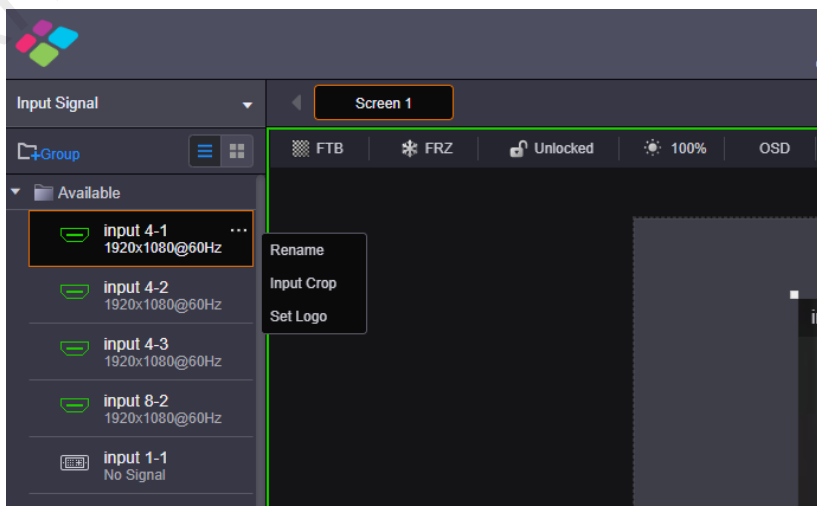
The H series supports the input source cropping function. The cropped input source can be used as a new input source.

Step 1 On the **Programming** page, click **Input Signal** on the left to view the input source list. The green connectors are accessed with signal sources.

Step 2 Select an input source and “...” appears next to the input source name.

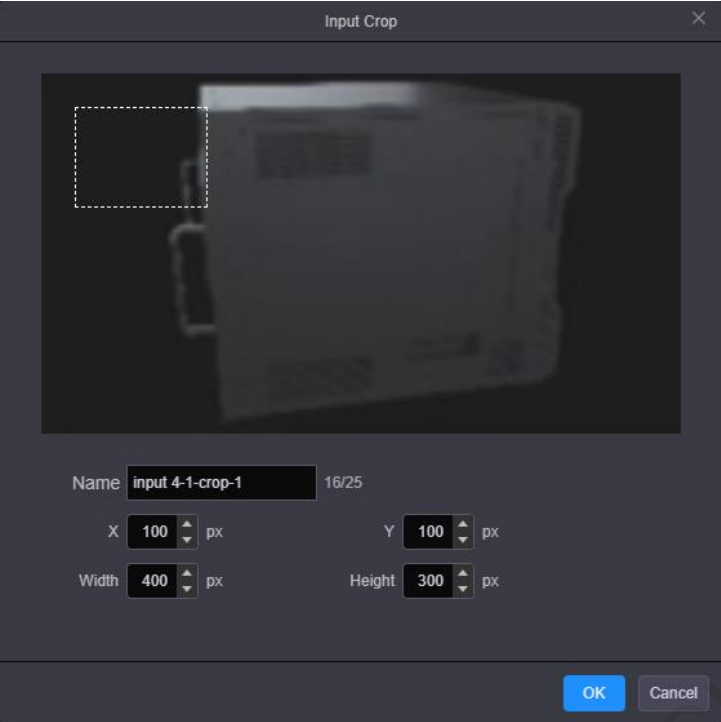
Step 3 Click “...” to pop up the input source operations menu.

Figure 4-18 Input source operations menu



Step 4 Select **Input Crop** to pop up the input source cropping window.

Figure 4-19 Cropping input source



Step 5 Name the cropped input source image.

Step 6 Enter the values in the **X** and **Y** text boxes to set the horizontal and vertical start positions respectively for the cropping. The cropping reference is the top left corner of the input source image.

Step 7 Enter the values in the **Width** and **Height** text boxes to set the width and height of the left area after cropping.

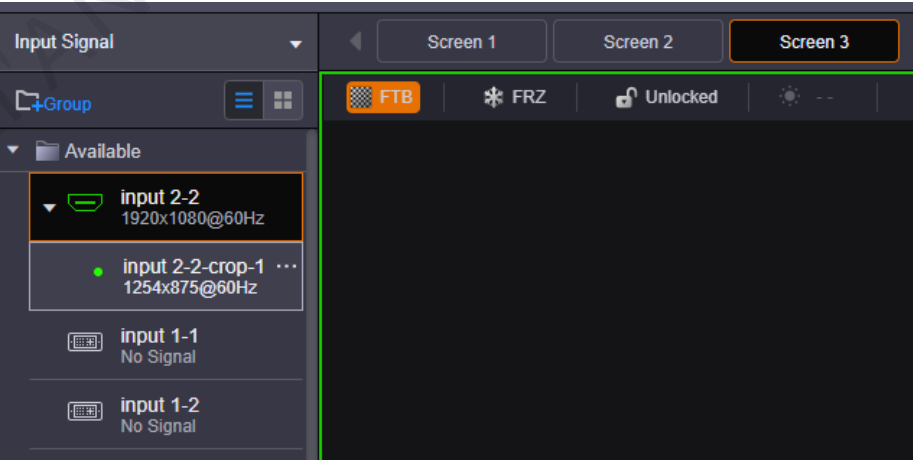
**Note:**

After the width and height values are set, click and drag the highlighted frame on the input source area to quickly adjust the start position for the cropping.

Step 8 Click **OK** to complete the cropping.

After the cropping, the new input source appears below the original input source in the **Input Signal** area. For the new input source, the operations such as renaming and cropping are also provided.

Figure 4-20 Cropped input source



## 4.8 Setting 3D Effect

The H series can work with the EMT200 3D emitter from NovaStar and 3D glasses to provide you with 3D visual experience.

You can set the 3D parameters in NovaLCT or on the Web.

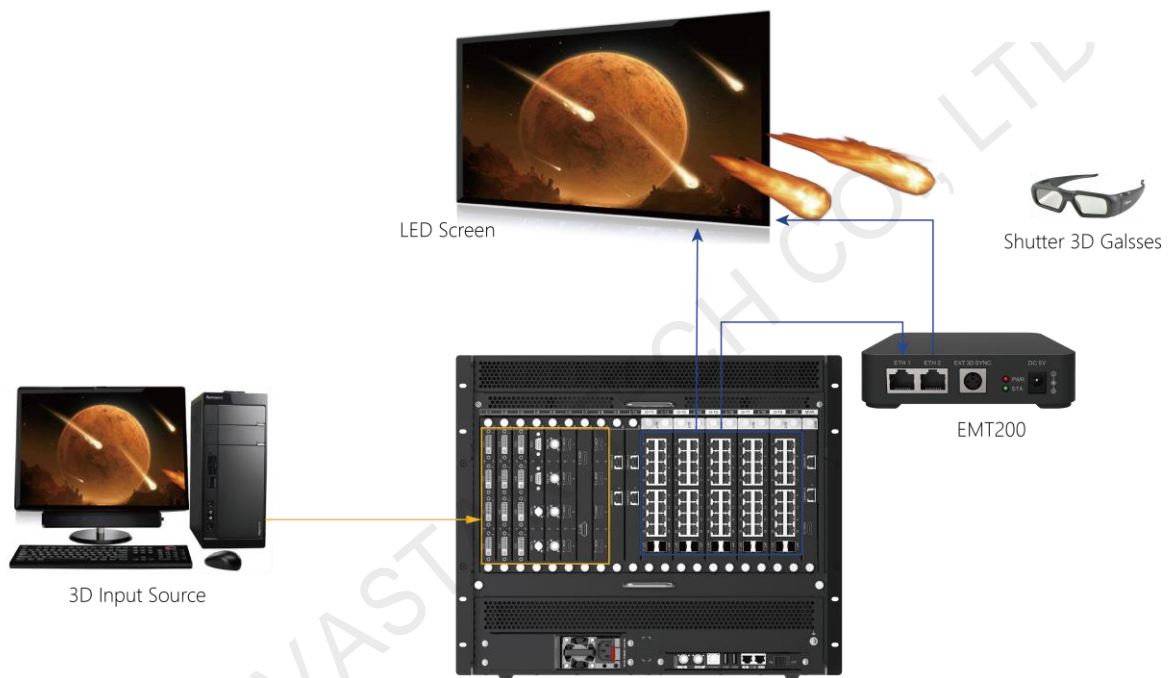
### Notes:

Turning on 3D mode will halve the device output capacity.

The 3D and low latency functions cannot be turned on at the same time.

For pixel-to-pixel display in 3D mode, if the 3D source is in side-by-side format, the layer width must be set to half of the input source width; if the 3D source is in top-and-bottom format, the layer height must be set to half of the input source height.

Figure 4-21 Hardware connections



The EMT200 is connected in between the LED 4K sending card and the receiving card via Ethernet cables, or connected to any of the receiving cards.

Each screen supports only one EMT200.

- Step 1 Log in to NovaLCT.
- Step 2 Go to **Screen Configuration > Sending Card > 3D Function**, and then select **Enable** to turn on the 3D function.
- Step 3 Click **Set 3D Parameters** to pop up the 3D parameter settings window.



Figure 4-22 Setting 3D parameters

- Step 4 Select the video source format. The options are **Side-by-Side**, **Top-and-Bottom** and **Frame Sequential**.
- Step 5 Set the eye priority according to the 3D glasses mode. The options are **Left eye** and **Right eye**.
- Step 6 Set the right eye start position.

---

**Notes:**

For side-by-side 3D sources, **Right Eye Start** must be set to half of the input source width.  
 For top-and-bottom 3D sources, **Right Eye Start** must be set to half of the input source height.

---

- Step 7 Select or unselect **Enable third-party emitter** according to your actual setup.
- Step 8 Adjust the signal delay time to make left and right eye images of the 3D glasses in sync with the images on the display.

### 3D Settings on Web

You can set the 3D effect on the Web page.


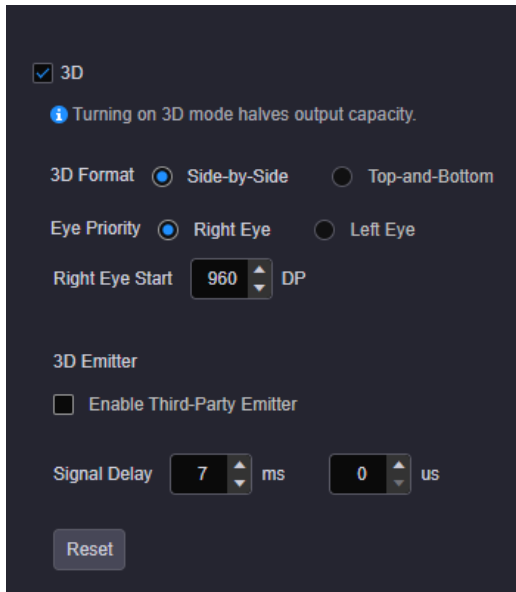
- Step 1 Click **Configuration** to enter the screen configuration page.
- Step 2 Select the desired screen on the top of the page.
- Step 3 Click  on the right edge to expand the configuration settings pane.
- Step 4 Click the **Basic Info** tab to show the basic settings.
- Step 5 Check the box next to **3D** to turn on the 3D function.

Figure 4-23 3D settings



- Step 6 Select the video source format based on the accessed 3D source. The options are **Side-by-Side** and **Top-and-Bottom**.
- Step 7 Set the eye priority according to the 3D glasses mode. The options are **Right Eye** and **Left Eye**.
- Step 8 Set the right eye start position.

**Notes:**

For side-by-side 3D sources, **Right Eye Start** must be set to half of the input source width.

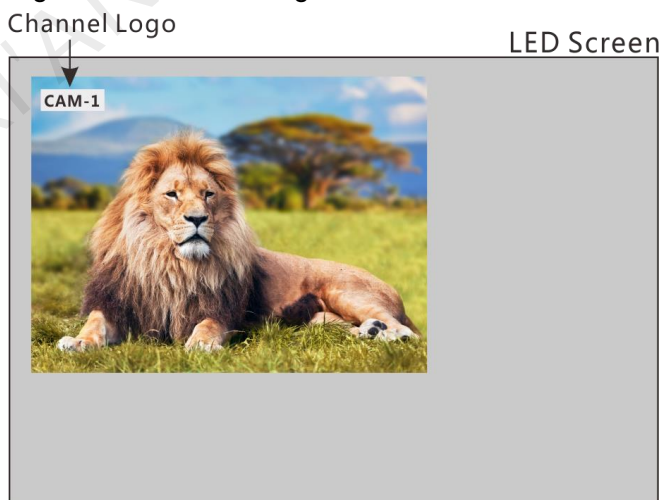
For top-and-bottom 3D sources, **Right Eye Start** must be set to half of the input source height.

- Step 9 Select or unselect **Enable Third-Party Emitter** according to your actual setup.
- Step 10 Adjust the signal delay time to make left and right eye images of the 3D glasses in sync with the images on the display.

## 4.9 Setting Channel Logos

The channel logo function allows you to set a logo for each input source, which is displayed on the top left of the layer. By using this function, you can quickly locate and identify the input source of the layer.

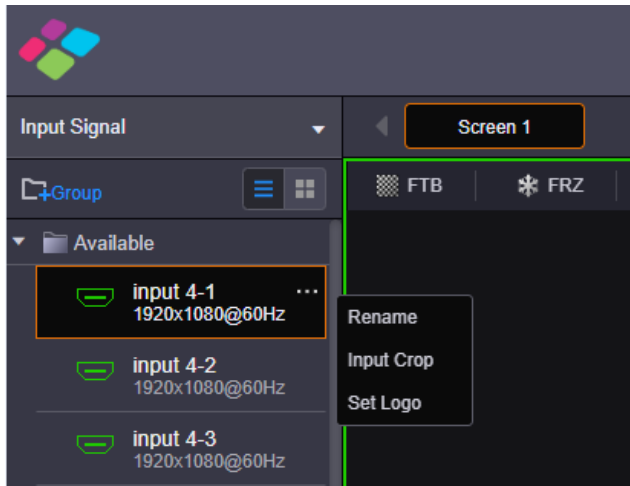
Figure 4-24 Channel logo



- Step 1 Select an input source and “...” appears next to the input source name.

Step 2 Click “...” to pop up the input source operations menu.

Figure 4-25 Input source operations menu



Step 3 Select **Set Logo** to pop up the channel logo settings window.

Figure 4-26 Setting logo



Step 4 Enable the logo function.

The H series supports text or image channel logos.

- Text logo
  - a. Enter the logo text in the **Content** text box.
  - b. Enter the values in the **X** and **Y** text boxes to set the position of the logo upon the input source.
  - c. Enter the values in the **Width** and **Height** text boxes to set the logo size.
  - d. Set the text font, size and color for the logo text.
  - e. Select **Enable BKG** and select a color for the logo background.
- Image logo
 

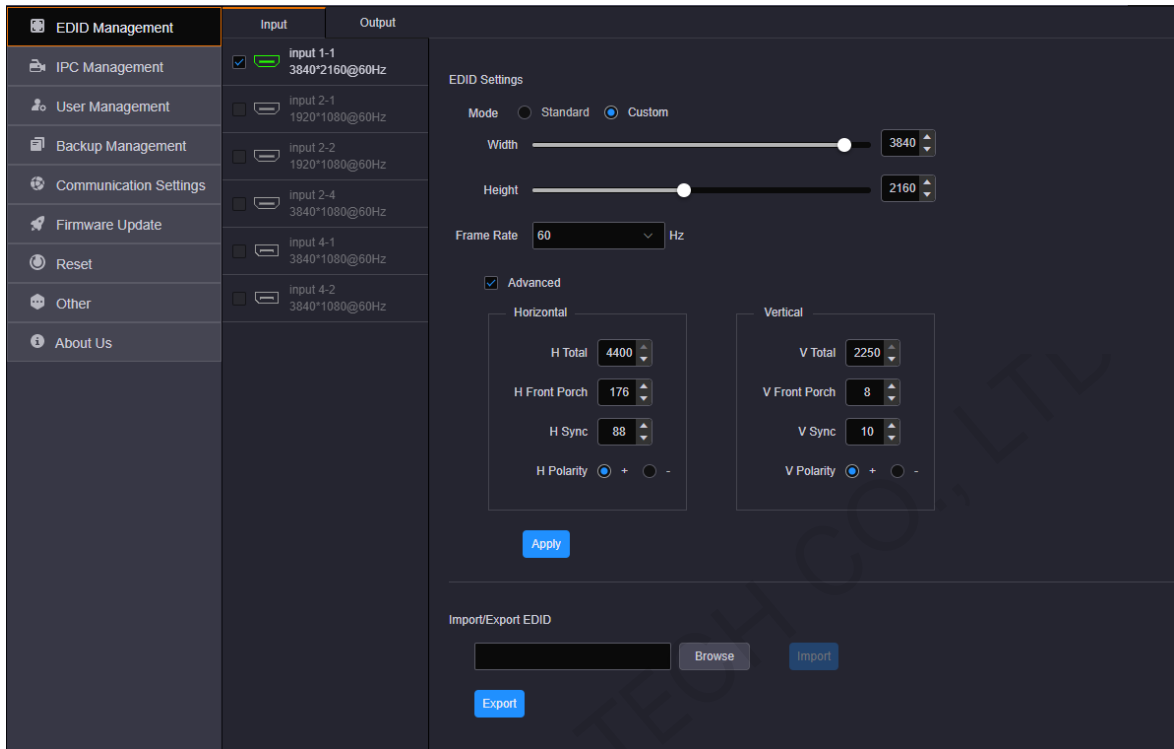
Click **Browse** to import an image as the channel logo, and then set the **X** and **Y** values to set the logo position.

The maximum width and height of the logo image can be up to 512 and 64 pixels respectively.

## 4.10 Setting Input and Output EDID

Step 1 Go to **Settings > EDID Management** to enter the EDID settings page.

Figure 4-27 EDID management



Step 2 Click the **Input** or **Output** tab to view the input or output connector resolution.

Step 3 Select the desired input or output connectors.

- Standard Resolution

Select a standard resolution from the drop-down list.

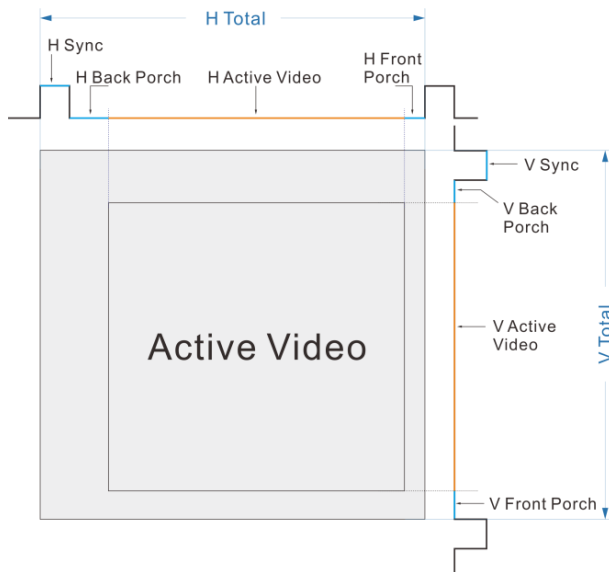
- Custom Resolution

Set the width, height and frame rate for the input or output connectors, and then click **Apply** to complete and apply the settings.

- Advanced

Under custom mode, you can select **Advanced** to enable the advanced EDID settings function. It is recommended personnel who are familiar with the EDID settings adopt this method. The parameters for advanced EDID settings are shown as follows.

Figure 4-28 Parameters for advanced EDID settings



- Import/Export EDID

Export the configured resolution parameters file for future use, or import an existing EDID configuration file.

---

**Notes:**

The H\_16xRJ45+2xfiber sending card and H\_20xRJ45 sending card support custom resolution settings only.

---

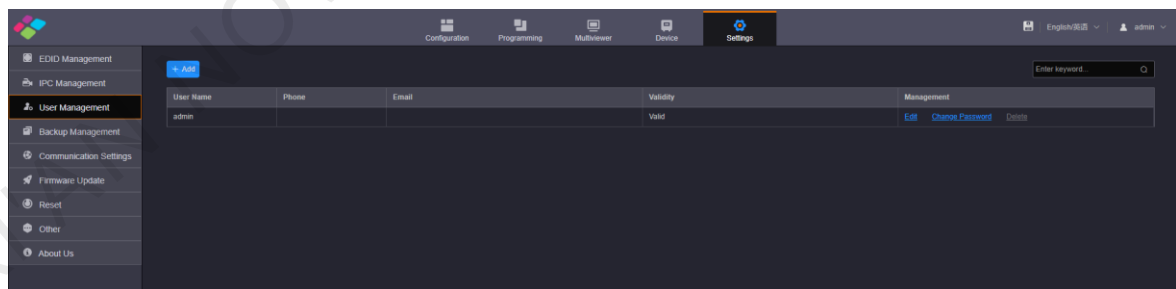
## 4.11 Managing Users

The H series supports multi-user collaboration at the same time. You can add new users as needed and grant users different permissions.

### Adding Users

- Step 1 Go to **Settings > User Management** to enter the user management page.

Figure 4-29 User management



- Step 2 Click **Add** to pop up the new user adding window.

Figure 4-30 Adding new users

Step 3 Enter the user name, password, phone number and email address.

Step 4 Select **Valid** to make the user account a valid one.

Step 5 Grant permissions to this new user as required.

Select the desired modules to give the editing permissions for these modules to the user.

Step 6 Click **OK** to complete the adding.

In the user list table, click **Edit** in the column of **Management** to change the user password, phone, email, permissions and other information. You can also set this user to an invalid one who has no permission to log in to the system.

Click **Delete** to delete this user, and then this user has no permission to log in to the system.

### Changing Password

Step 1 In the user list table, select the desired user.

Step 2 Click **Change Password** in the column of **Management** to change the user password.

Figure 4-31 Changing password

Step 3 Enter your current password in the **Old Password** text box.

Step 4 Enter your new password both in the **New Password** text box.

Step 5 Click **OK** to apply the change.

### Changing User Permissions

Step 1 In the user list table, select the desired user.

Step 2 Click **Edit** in the column of **Management** to pop up the user editing window.

Figure 4-32 Editing users

Step 3 Enter the new phone number and email address.

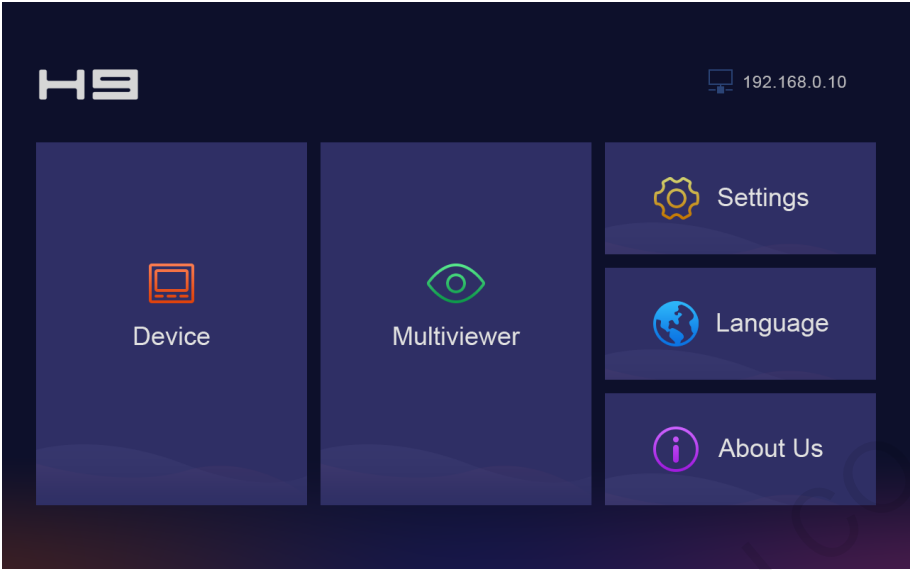
Step 4 Grant permissions to the user.

Step 5 Click **OK** to update the user information.

# 5 LCD Menu Introduction

After the device is successfully powered on, the home screen is displayed as follows.

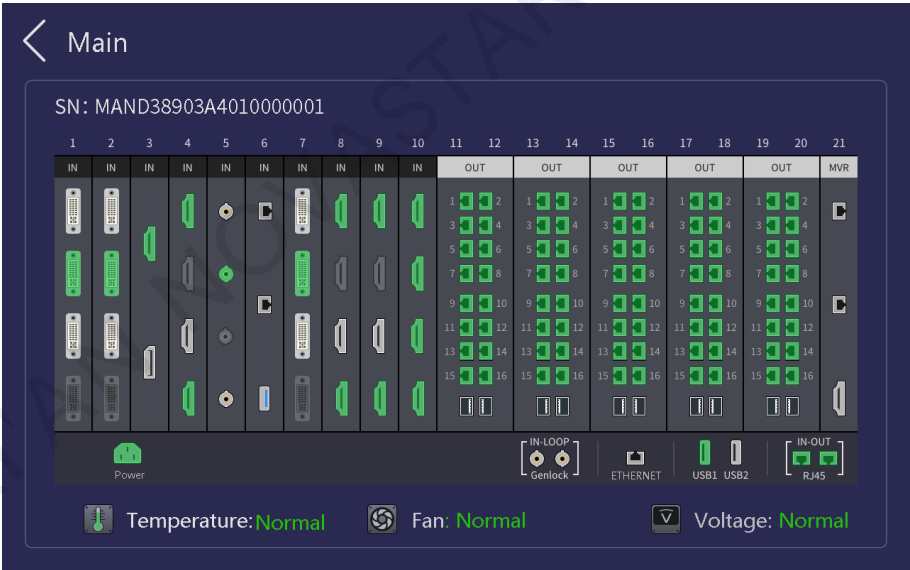
Figure 5-1 Home screen



## 5.1 Device

Select **Device** to view the device-related information.

Figure 5-2 Device



You can view the device serial number (SN) and the connection statuses of all connectors.

- Green connector: The connector is connected normally.
- White connector: The connector is not connected yet.
- Gray connector: The connector is unavailable.

Below the connector area, the device temperature, fan and power statuses are displayed.

## 5.2 Multiviewer

View the input and screen monitoring information.



Figure 5-3 Multiviewer



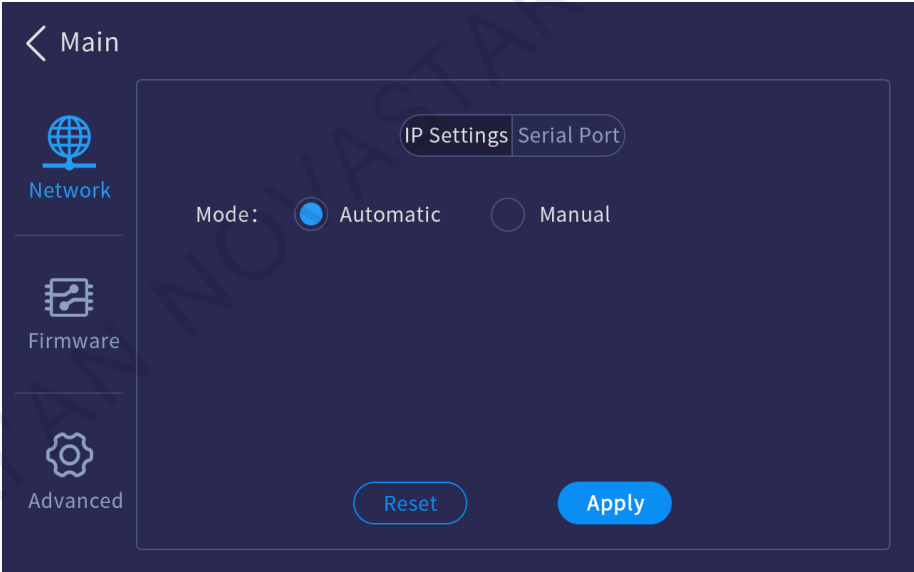
### 5.3 Settings

Set the device network mode, other advanced properties, and view the firmware version.

#### 5.3.1 Communication Settings

Set the network parameters for the device.

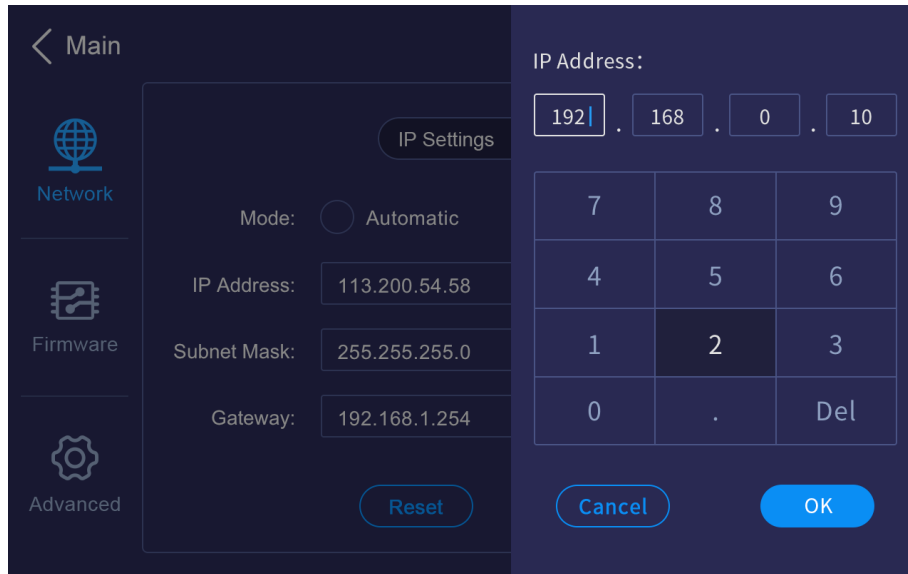
Figure 5-4 Communication



#### IP Settings

Set to obtain an IP address automatically or manually. When a router or switch is used, it is recommended you select the **Automatic** option. The device IP address will be assigned by the router or switch. When the **Manual** option is selected, you must set the device IP address, subnet mask and gateway.

Figure 5-5 IP settings



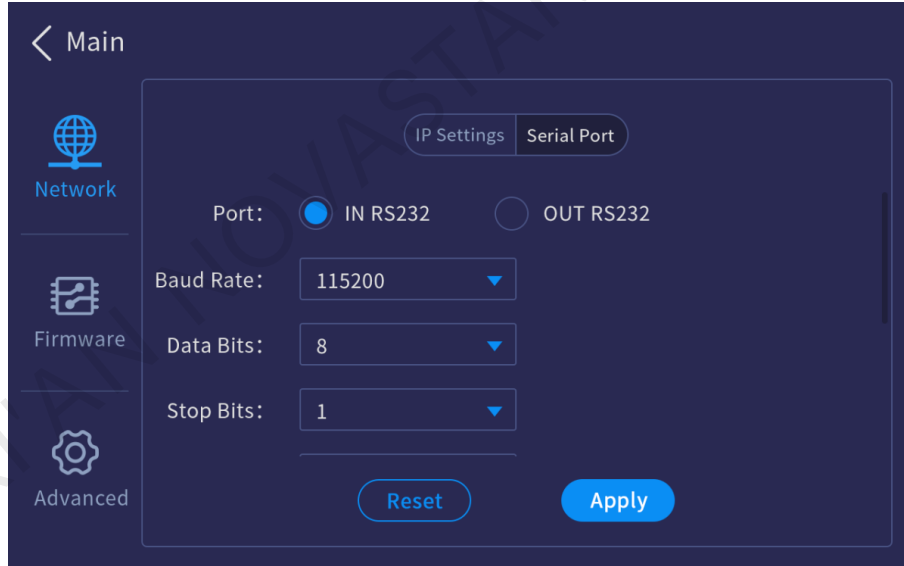
**Note:**

When you select to obtain the IP address manually, the IP addresses of both the device and control PC must be on the same network segment.

**Serial Port Settings**

Set the baud rate, data bits, stop bits and other related information for the RS232 serial port.

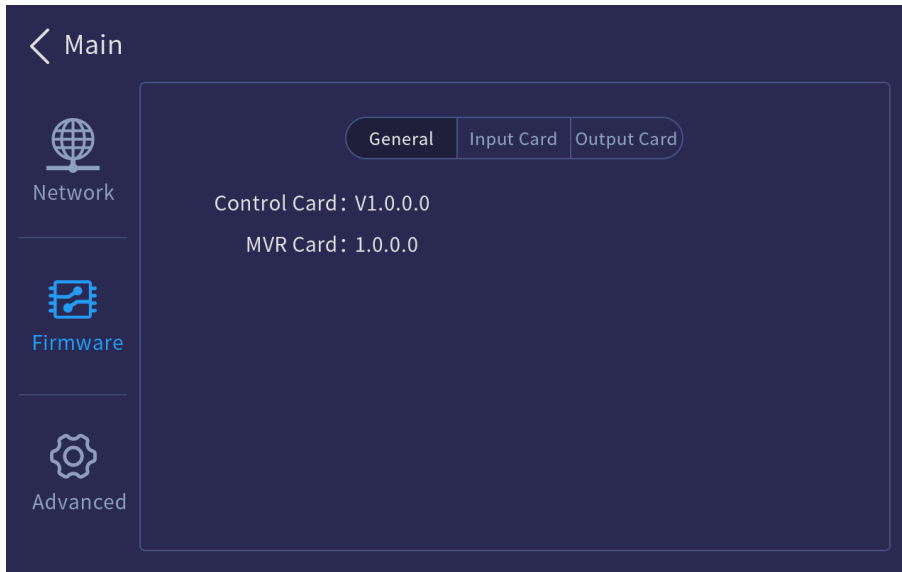
Figure 5-6 Serial port settings



**5.3.2 Firmware Version**

View the versions of all cards.

Figure 5-7 Firmware version

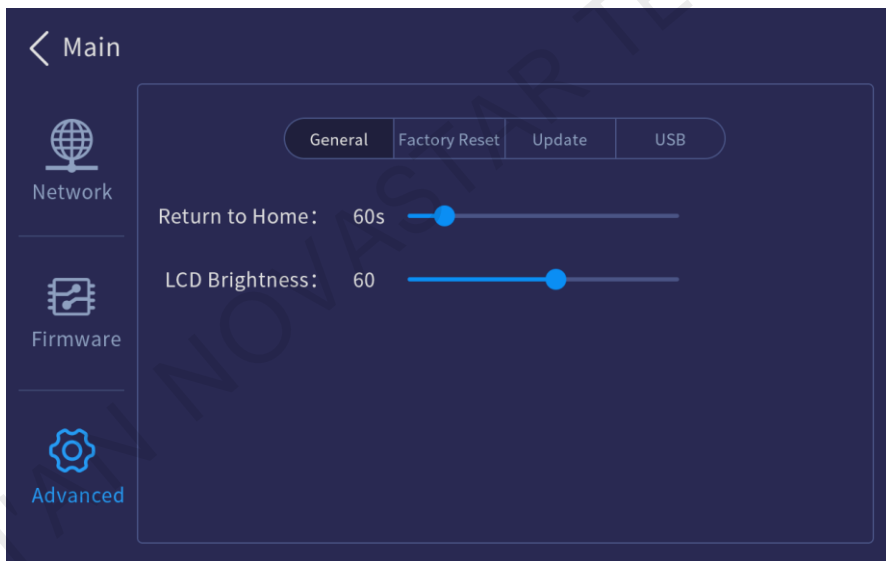


### 5.3.3 Advanced Settings

The advanced settings include the device general settings, factory reset, firmware update and USB import and export.

Select **Advanced** to enter the advanced setting screen.

Figure 5-8 Advanced settings



#### General Settings

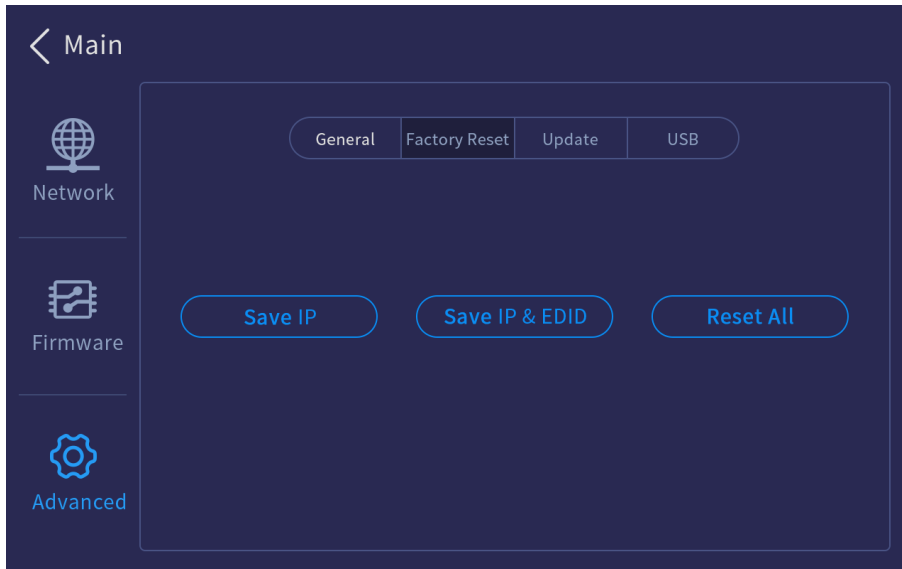
Select **General** and you can perform the following operations.

- Return to Home: Set the period time during which the system stays at the current screen before returning to the home screen automatically when there is no operation performed. The default value is **60s** and the value range is 0s to 3600s.
- LCD Brightness: Set the device screen brightness.

#### Factory Reset

Clear the data stored in the device, and reset the device settings to factory defaults.

Figure 5-9 Factory reset



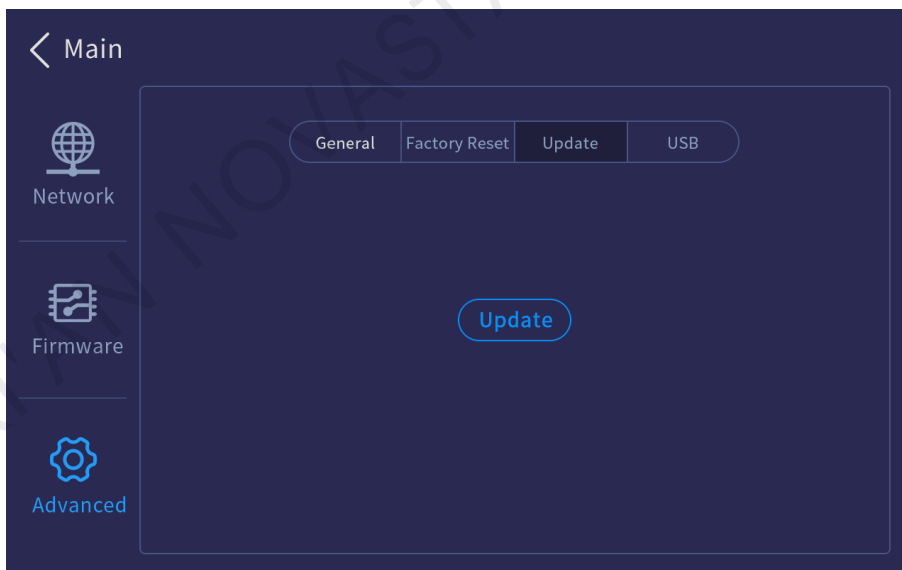
- Save IP: Reset all the parameters to factory defaults, except the device IP address.
- Save IP & EDID: Reset all the parameters to factory defaults, except the device IP address and EDID.
- Reset All: Reset all the parameters to factory defaults.

### Firmware Update

Update the firmware using a USB drive. Make sure the update file is stored in the root directory of the USB drive before you update the firmware, and then insert the USB drive into the USB port on the H\_Control card.

- Step 1 Go to **Settings > Advanced > Update** to enter the firmware update screen.

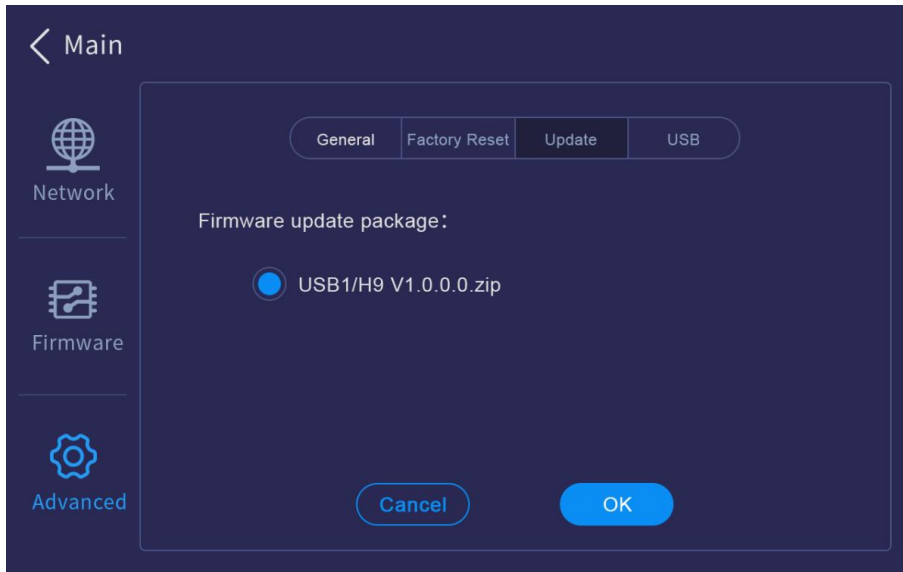
Figure 5-10 Firmware update



The system will automatically read the USB drive and detect the update file in the USB drive.

- Step 2 Select the update file and click **OK** to start the update.

Figure 5-11 Selecting update file

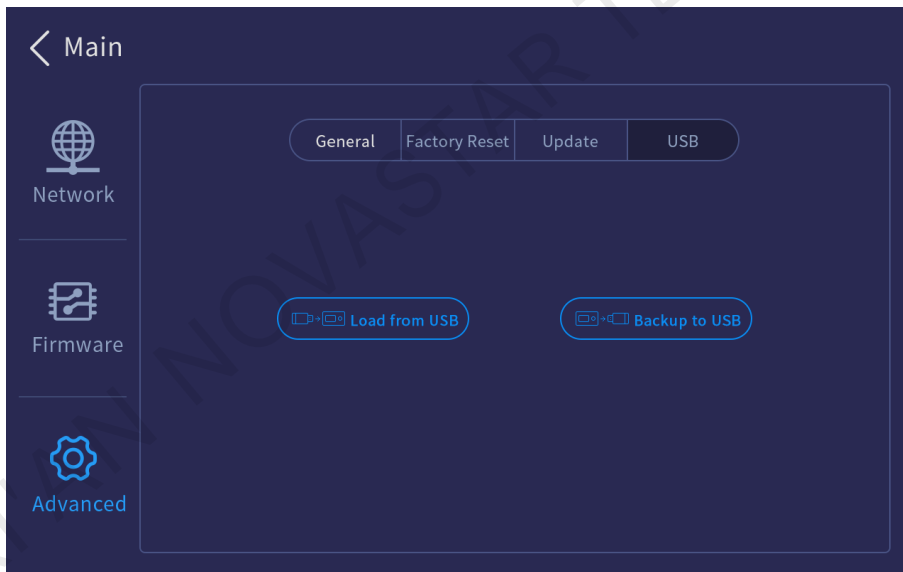


Step 3 When the message “**Updated successfully**” appears, click **Close** to restart the system.

### USB Import and Export

The H series supports importing and exporting the device data using a USB drive, which will greatly facilitate the new device configuration in the future.

Figure 5-12 Importing and exporting device data using a USB drive

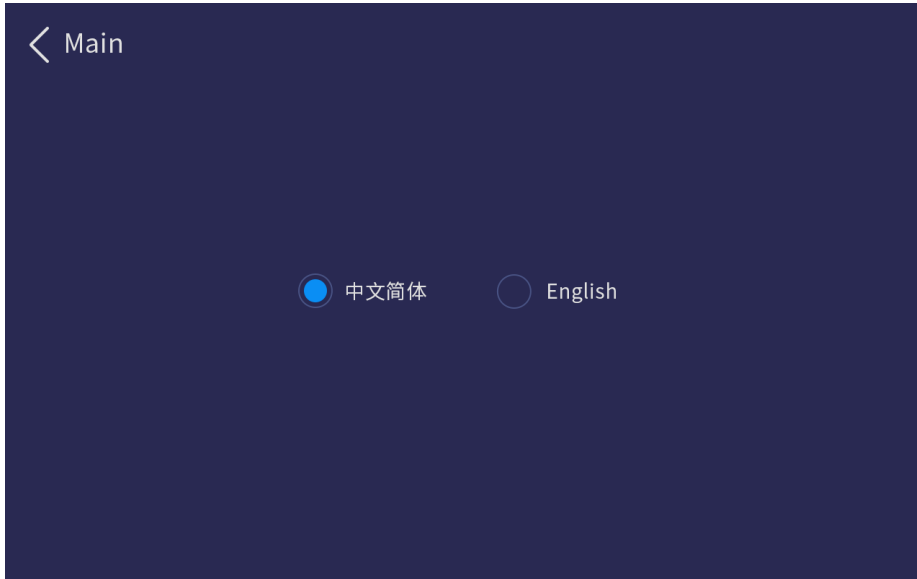


- Load from USB: Import the data from a USB drive.
- Backup to USB: Export the device data to a USB drive for backup.

## 5.4 Language

Change the UI language. The H series currently supports English and Simplified Chinese.

Figure 5-13 Changing language



---

**Notes:**

Switching the device front panel UI language will simultaneously switch the Web page UI language.

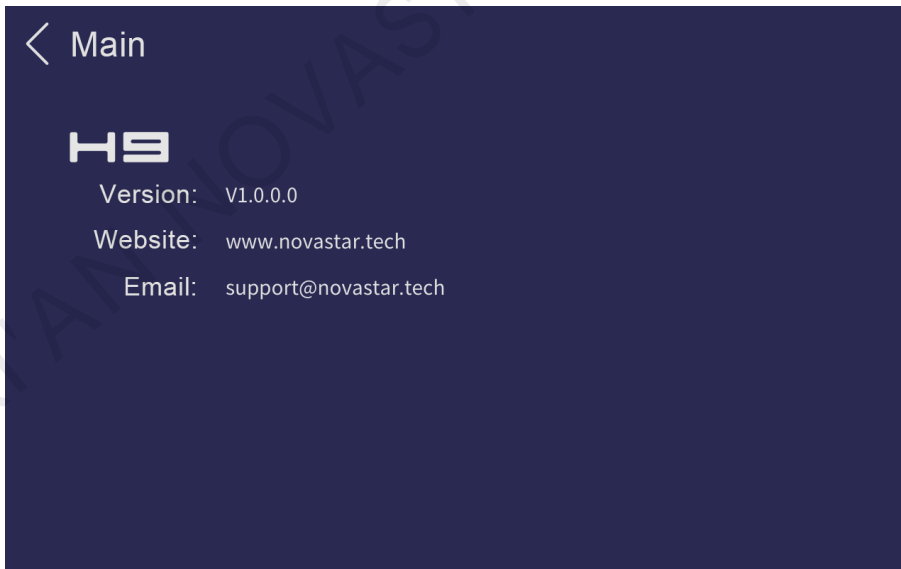
The H2 does not support UI language switching via the front panel menu. If you need to switch the language, set it on the Web page.

---


## 5.5 About Us

View the device hardware version, company website ([www.novastar.tech](http://www.novastar.tech)) and email address ([support@novastar.tech](mailto:support@novastar.tech)).

Figure 5-14 About us



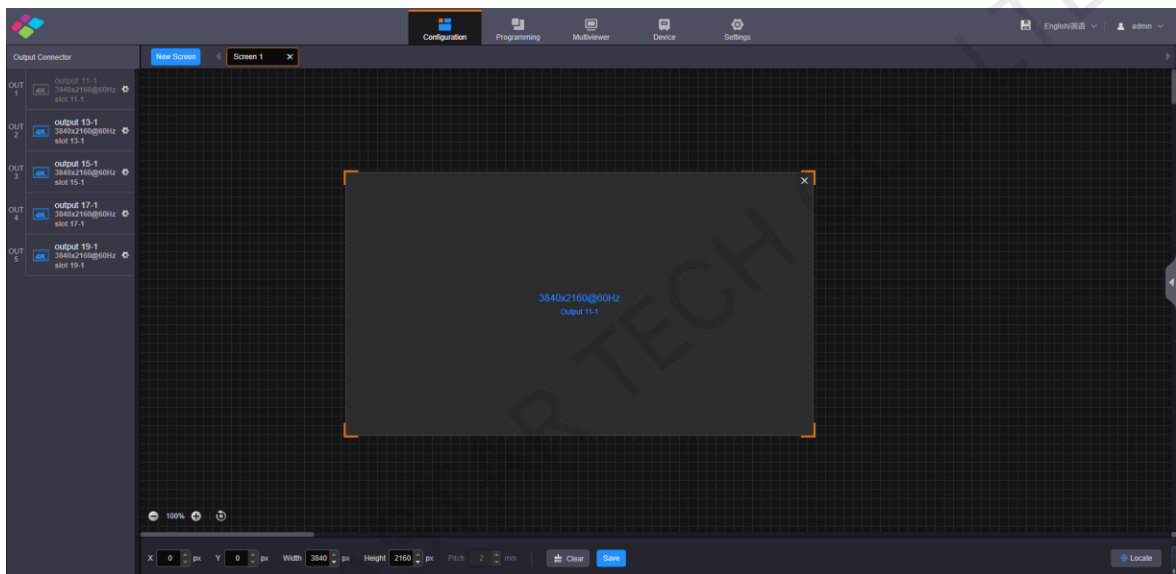
## 6 Web Introduction

- On the main user interface of the Web page, click  at the top right to save the configuration data to your local hard drive for future use.
- Click the drop-down arrow in the language area to change both the device front panel and Web UI language.
- Click the user name and select **Log Out** to end access to the system.

### 6.1 Screen Configuration

After you log in to the Web page, the screen configuration page is displayed by default. On this page, you can perform the operations such as changing the screen structure, renaming the screen, setting the test pattern as well as adjusting the output color.

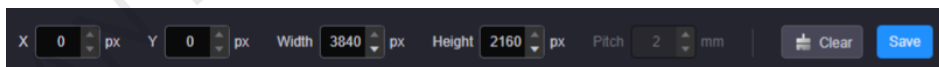
Figure 6-1 Screen configuration



#### Output Cropping

At the bottom of this page, you can set the cropping of each output area.

Figure 6-2 Output cropping



- **X**: Set the horizontal initial position for the cropping. The default value is 0 and the reference point for the cropping is the top left corner of the current output image.
- **Y**: Set the vertical initial position for the cropping. The default value is 0 and the reference point for the cropping is the top left corner of the current output image.
- **Width**: Set the width of the cropped area. The range is 64 to the width of the output image. The default value is the width of the current output image.
- **Height**: Set the height of the cropped area. The range is 64 to the height of the output image. The default value is the height of the current output image.
- Click **Clear** to clear the screen and screen configuration.
- Click **Save** to complete and save the screen configuration.

#### Output Locating

Click the **Locate** button at the bottom right to show the output No. and output connector on the screen loaded by the device. By using this function, you can quickly check the corresponding relationship between the

screen and the output connector or the virtual output connector, and adjust the screen structure accordingly as needed.

## Screen Configuration Parameters


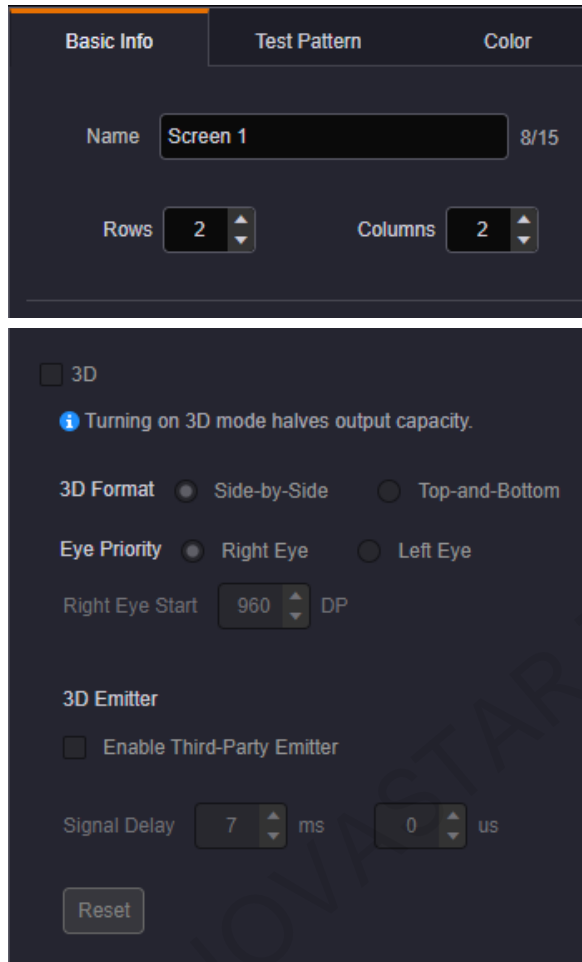
On the screen configuration page, click  at the right edge to expand the screen parameter settings pane.

Figure 6-3 Screen configuration parameters



The screenshot shows a configuration interface with three tabs: Basic Info, Test Pattern, and Color. The Basic Info tab is selected and contains the following elements:

- Name:** A text input field containing "Screen 1" with a character count of 8/15.
- Rows and Columns:** Two numeric input fields, both set to "2".
- 3D Section:**
  - 3D
  - Info icon: Turning on 3D mode halves output capacity.
  - 3D Format:** Radio buttons for Side-by-Side (selected) and Top-and-Bottom.
  - Eye Priority:** Radio buttons for Right Eye (selected) and Left Eye.
  - Right Eye Start:** A numeric input field set to 960, followed by "DP".
  - 3D Emitter:**  Enable Third-Party Emitter.
  - Signal Delay:** Two numeric input fields set to 7 ms and 0 us.
  - Reset:** A button at the bottom left.

Table 6-1 Screen configuration parameters

Function	Parameter	Description
Basic Info	Name	Give a proper name to the screen for easy management. The screen name supports up to 15 Chinese characters, English letters, numbers, spaces, underscores and hyphens, and cannot be all spaces.
	Rows and columns	Set the row and column quantities to change the screen structure.
	3D	Set 3D related parameters to provide users with 3D visual experience. For detailed settings, please refer to <a href="#">3D Settings on Web</a> .
Test Pattern	Test pattern	Test patterns are used to check the connection between the output connectors and the LED screen and check whether the display is normal. <ul style="list-style-type: none"> <li>Select or deselect <b>Enable</b> to open or close the test pattern.</li> <li>Spacing: Set the width of gradient color or the space between test lines. This parameter is configurable when the test pattern is not a pure color.</li> </ul>



		<ul style="list-style-type: none"> <li>• Speed: Set the moving speed of the test lines. This parameter is configurable when the test pattern has lines.</li> <li>• Brightness: Set the brightness of the test patterns on the LED screen.</li> </ul>
Color	Mode	Four display modes are provided for different user needs. The options are <b>Standard</b> , <b>Document</b> , <b>Conference</b> and <b>Video</b> .
	Eye saver mode	Turn on or turn off the eye saver mode for Web page.
	Contrast	Contrast is the ratio of the luminance of the brightest color to that of the darkest color. Generally, the higher the contrast, the more clearer and colorful the image is. On the contrary, the entire image becomes gloomy. Contrast affects the exposure level of the entire image. It makes the bright part brighter and the dark part darker. The value range is 0 to 100, and it defaults to <b>50</b> .
	Brightness	Brightness is the shading of lights in the image. When the brightness increases, viewers will be dazzled. When the brightness decreases, the image becomes dark. The value range is 0 to 100, and it defaults to <b>50</b> .
	Saturation	Adjust the colorfulness of the output image. The value range is 0 to 100, and it defaults to <b>50</b> .
	Hue	Set the relative degree of how bright or dark the output image is. The value range is -180 to +180, and it defaults to <b>0</b> .
	Color Temperature	Adjust the cool or warm degree of the output image. The lower the temperature, the warmer (redder) the image is. The higher the temperature, the colder (bluer) the image is.
	Gamma	Gamma: Set the Gamma for the output image. The value range is 0.25 to 4.00, and it defaults to <b>1.00</b> .
	HDR	<p>HDR is the abbreviation for High-Dynamic Range. HDR function can greatly enhance the display image quality, allowing for a more clear and vivid image when the device is used together with NovaStar A8s/A10s receiving cards.</p> <p>Select <b>HDR</b> to enable the HDR function.</p> <ul style="list-style-type: none"> <li>• Peak Screen Brightness: Adjust the screen brightness under normal operation. The value ranges from 100 to 10000 and defaults to 1000.</li> <li>• Ambient Brightness: Display the ambient brightness. The value ranges from 0 to 200 and defaults to 30.</li> <li>• Low Grayscale Mode: Adjust the screen image grayscale. The value ranges from 0 to 50 and defaults to 15.</li> </ul>

## Output Connectors


Click  next to the output connector to expand the output connector settings pane where you can set the following parameters.

Figure 6-4 Output connector parameters

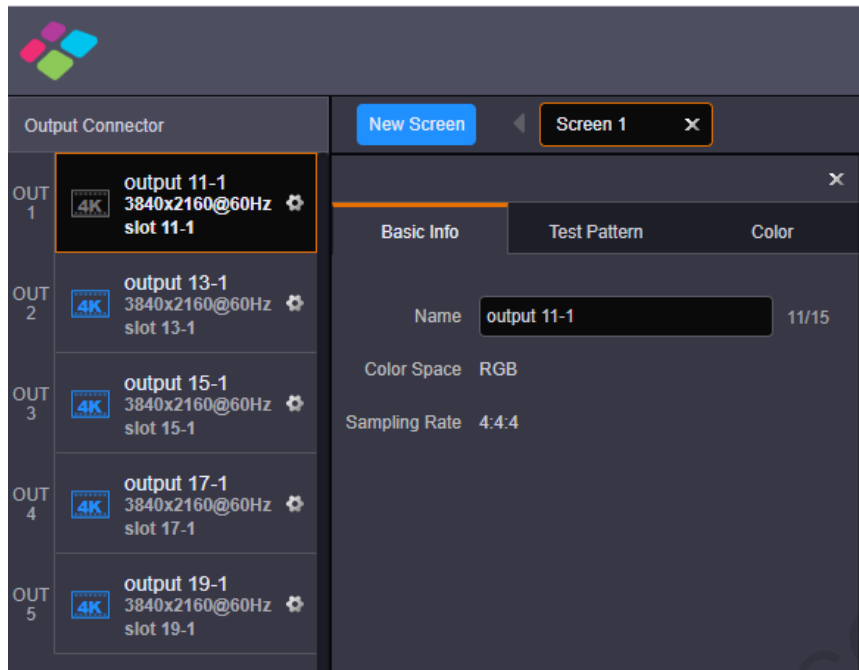


Table 6-2 Output connector parameters

Function	Parameter	Description
Basic Info	Name	Give a proper name to the output connector for easy management. The connector name supports up to 15 Chinese characters, English letters, numbers, spaces, underscores and hyphens, and cannot be all spaces.
	Color Space/Sampling Rate	Display the color space and sampling rate of the output connector, which can be set on the <b>Device</b> page.
Test Pattern	Test pattern	Test patterns are used to check the connection between the output connectors and the LED screen and check whether the display is normal. <ul style="list-style-type: none"> <li>Select or deselect <b>Enable</b> to open or close the test pattern.</li> <li>Spacing: Set the width of gradient color or the space between test lines. This parameter is configurable when the test pattern is not a pure color.</li> <li>Speed: Set the moving speed of the test lines. This parameter is configurable when the test pattern has lines.</li> <li>Brightness: Set the brightness of the test patterns on the LED screen.</li> </ul>
Color	Contrast	Contrast is the ratio of the luminance of the brightest color to that of the darkest color. Generally, the higher the contrast, the more clearer and colorful the image is. On the contrary, the entire image becomes gloomy. Contrast affects the exposure level of the entire image. It makes the bright part brighter and the dark part darker. The value range is 0 to 100, and it defaults to <b>50</b> .
	Brightness	Brightness is the shading of lights in the image. When the brightness increases, viewers will be dazzled. When the brightness decreases, the image becomes dark. The value range is 0 to 100, and it defaults to <b>50</b> .
	Saturation	Adjust the colorfulness of the output image. The value range is 0 to 100, and it defaults to <b>50</b> .

Function	Parameter	Description
	Hue	Set the relative degree of how bright or dark the output image is. The value range is $-180$ to $+180$ , and it defaults to <b>0</b> .
	Color Temperature	Adjust the cool or warm degree of the output image. The lower the temperature, the warmer (redder) the image is. The higher the temperature, the colder (bluer) the image is.
	Gamma	Gamma: Set the Gamma for the output image. The value range is $0.25$ to $4.00$ , and it defaults to <b>1.00</b> .

## 6.2 Programming

Click the **Programming** tab on the top to enter the programming page where you can perform the operations such as adding layers and BKG, cropping the input source, setting the preset and preset playback.

Figure 6-5 Programming



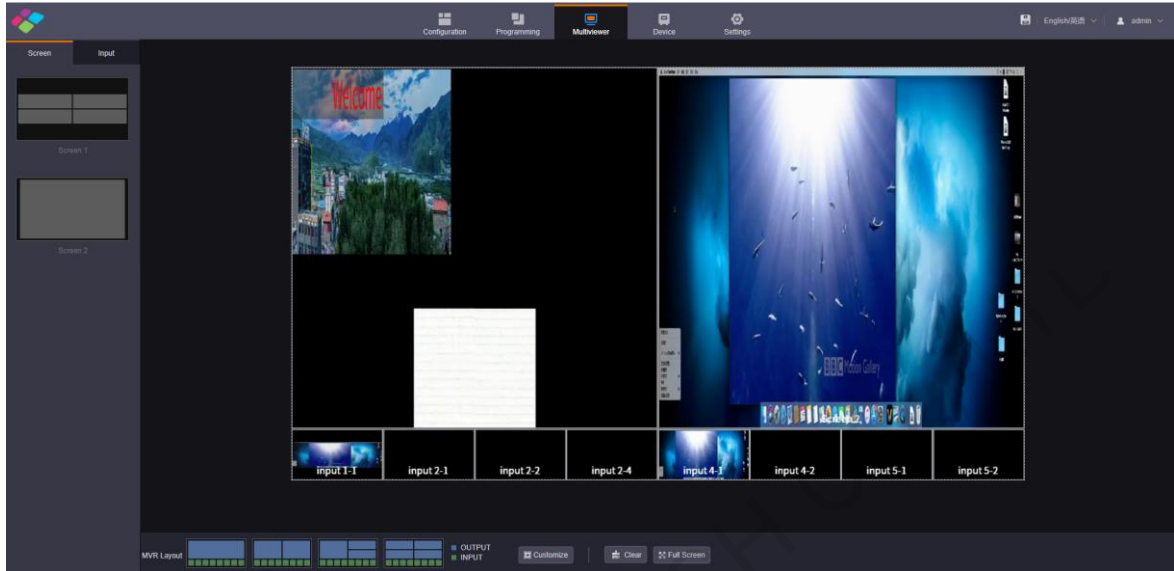
### Button and icon descriptions:

- : Zoom out the layer editing area.
- : Zoom in the layer editing area.
- : Display all the layers in the editing area in a perfect way, that is all the layers can be viewed completely.
- **FTB**: If the icon is highlighted, the output image will fade to black; otherwise, the output image will be displayed normally.
- **FRZ**: If the icon is highlighted, the current frame of the output image is frozen and the layer image cannot be edited; otherwise, the output image is not frozen.
- : Lock the editing area, and layer editing is prohibited.
- : Unlock the editing area.
- : Adjust the output image brightness.
- **Live**: Turn on this function to display the layer editing process on the LED screen in real time. Turn off this function to not display the editing process on the LED screen, and click the **Pre-Edit** button if you want to display the output image on the LED screen.
- : Undo the last operation. This button is available in pre-edit mode only.
- **Pre-Edit**: When the **Live** function is turned off, click this button to display the output image on the LED screen.

## 6.3 Multiviewer

Click the **Multiviewer** tab on the top to enter the monitoring page. Select the **Screen** or **Input** tab on the left, and then click and drag the desired screens or input sources to the monitoring editing area on the right. After the editing, you can go to Multiviewer on the LCD screen on the device front panel to view the monitoring information.

Figure 6-6 Multiviewer editing



- Screen: Display all the output images of the screens.
- Input: Display all the input source images. Select **View inputs with signals** and the system only displays the input sources that are accessed with signals.
- MVR Layout: 4 layouts are provided for quick arrangement.
- Customize: Add new custom layouts.
- Clear: Clear all the MVR windows.
- Full Screen: Make the selected MVR window display in full screen.

### Setting MVR Properties


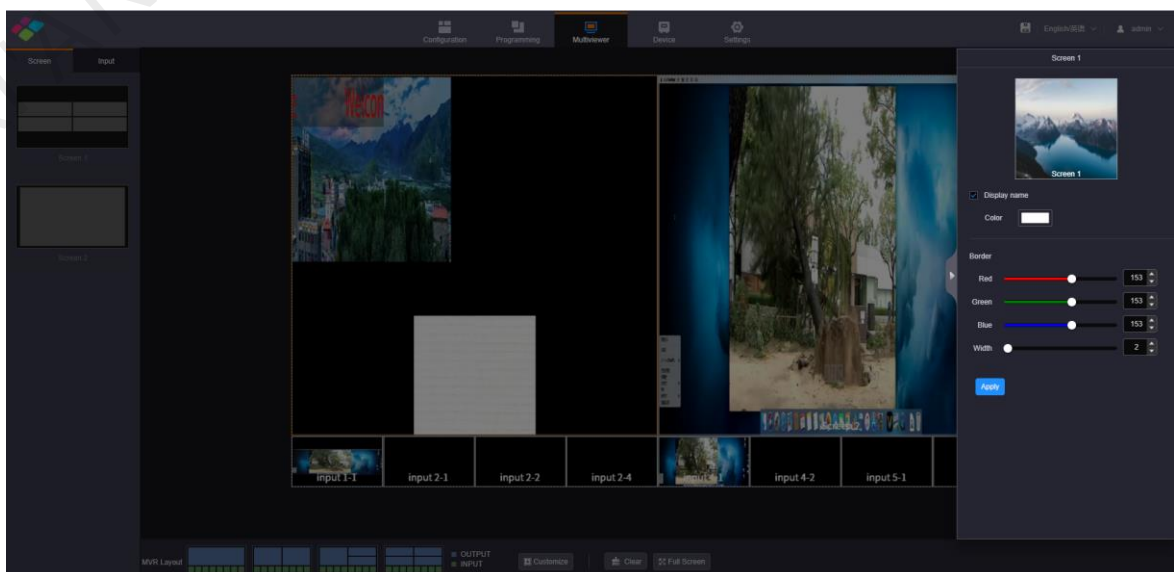
On the Multiviewer page, select an MVR window and click  at the top right of the window to expand the MVR property settings pane.

Figure 6-7 MVR property settings



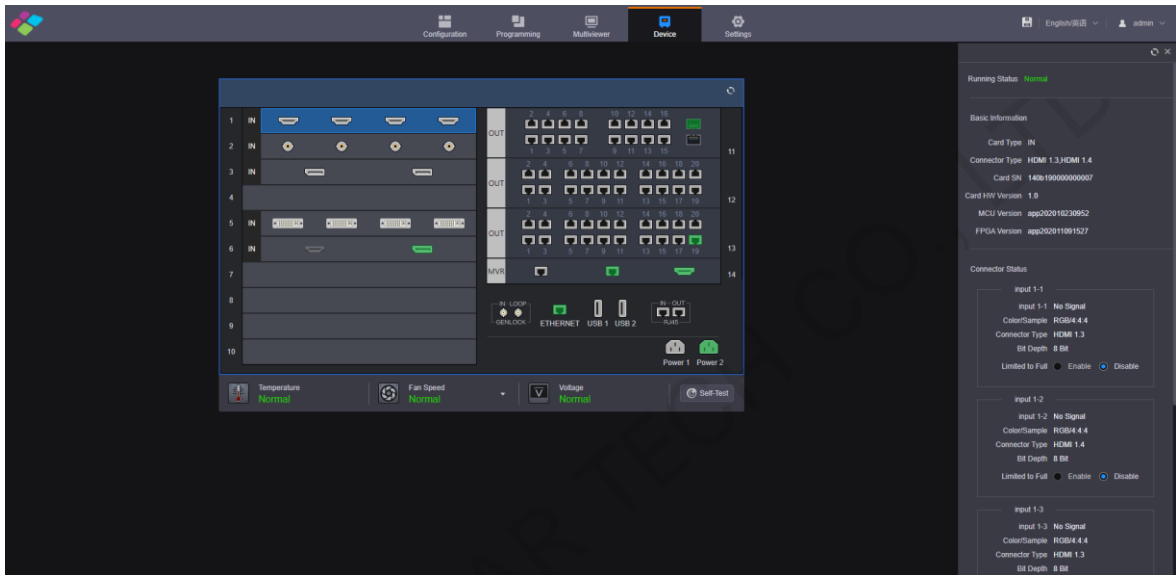
- **Display Name:** Enable or disable the display of the MVR window name. When enabled, the name color can be set.
- **Border:** Set the color of the MVR window border by adjusting the R, G and B values individually. Set the width of the MVR window border.

After the settings, click **Apply** to save and apply the settings.

## 6.4 Device

Click the **Device** tab on the top to enter the device page where you can view the input or output card statuses and device running status. If the device fails, check the health status of each module by clicking **Self-Test** on this page. If the fan fails, click the drop-down arrow in the fan status area to check which fan fails exactly.

Figure 6-8 Device



- The connector in green is connected.
- The connector in white is not connected, or the connected device fails.
- The connector in gray is unavailable.
- **Self-Test:** Diagnose the device and send the test result to NovaStar's technical support engineers for confirming and fixing the problems as soon as possible.

### Input Card

Click an input card to view the input card type, connector type, card version, card SN and connector status and so on.

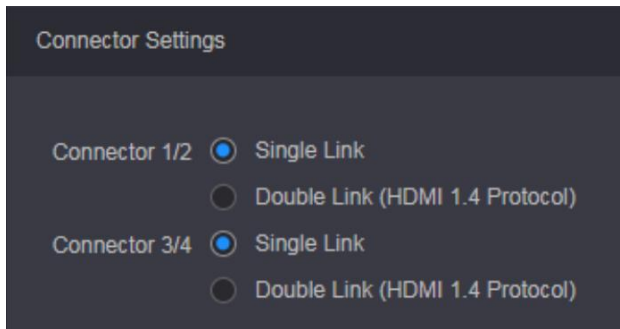
- **Running status:** Display the input card status.
  - Normal: The input card is normal and can be used.
  - Abnormal: The input card is abnormal and cannot be used.
- **Basic Information:** View the basic information of the input card, including the card type, connector type, SN and version.
- **Connector Status:** View the input resolution of each connector, the color space and sampling rate of the input source, the input connector type and input source bit depth, which are read by the system automatically and cannot be changed.
  - Connector status shows you the input signal status, color space and sampling rate, input connector type, input source bit depth which are all read automatically and cannot be changed.
  - Limited to Full: Convert an RGB limited input source to an RGB full range source for more precise video processing.

Disable: Turn off the limited to full converting function.

Enable: Turn on the limited to full converting function. It is recommended you turn on the function when the accessed input source has a limited color range.

- Connector Settings: Select the single link or dual link mode for the input connector.

Figure 6-9 Connector settings



When you set the input connector 1/2 to dual link mode, connector 1 is unavailable and connector 2 is used as a dual link connector. The input connector 3/4 follows the same rule.

When the input card is an H\_1xHDMI2.0+1xDP1.2 input card that supports only one input each time, you can set select HDMI 2.0 or DP 1.2 connector here.

- When the input card is an H\_2xRJ45 IP input card, you need to set the working mode for two Ethernet ports. The working mode is independent by default, and you need to set the IP address, subnet mask and other information for each Ethernet port independently.

## Output Card

The output card can be the H\_16xRJ45+2xfiber sending card or the H\_20xRJ45 sending card.

- Running status: Display the current output card status.
  - Normal: The card is connected normally and can be used for output.
  - Abnormal: The card fails and cannot be used for output.
- Basic Information: View the basic information of the output card, including the card type, connector type, serial number and version number.
- Connector Status: Set the bit depth of the output image. The supported options are 8-bit and 10-bit.

## MRV Card

The MVR card is the preview card.

- Running Status: Display the MVR card status.
  - Normal: The card is connected normally and can be used for output.
  - Abnormal: The card fails and cannot be used for output.
- Basic Information: View the basic information of the MVR card, including the card type, connector type, serial number and version number.
- Network Settings: When Ethernet ports are used for output, you need to set the IP addresses of two Ethernet ports and the URLs for the screen and input monitoring.
  - Mode: Set the working mode of the Ethernet port. The working mode is independent by default, and you need to set the IP address, subnet mask and other information for each Ethernet port independently.
  - IP address: Set the IP address for each Ethernet port.
  - Subnet Mask: Set the subnet mask.
  - Gateway: Set the gateway.
  - URL: Set the URL paths and ports for the input and screen monitoring.

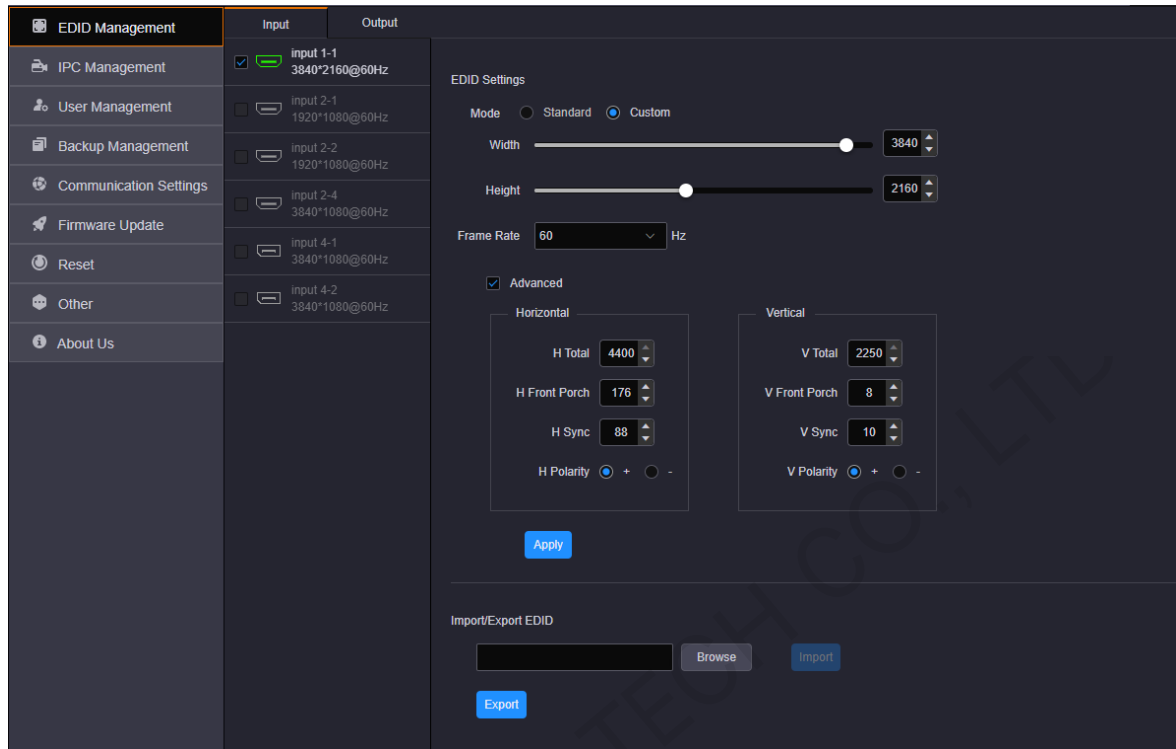
## Control Card

View the basic information of the control card and AUX card, including the running statuses, serial numbers and hardware version numbers.

## 6.5 Settings

Click the **Settings** tab on the top to enter the settings page.

Figure 6-10 Settings



### 6.5.1 EDID Management

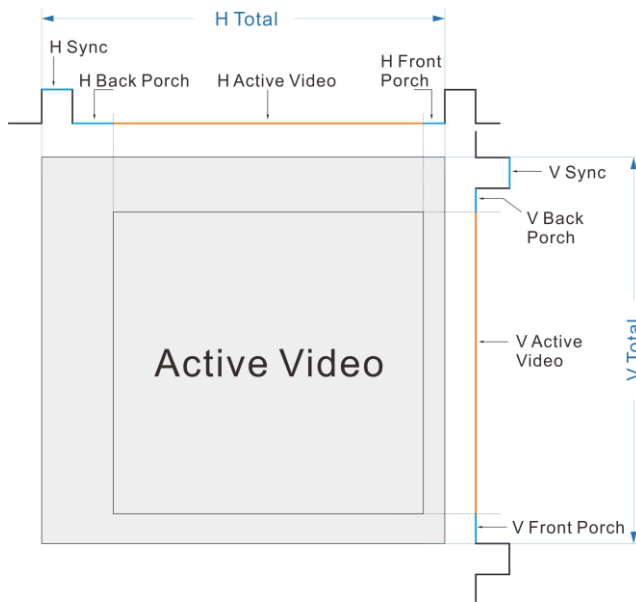
Set the input and output resolution. You can set the input or output connector resolution through the following four ways.

- Standard resolution  
Select an input or output resolution from the drop-down list next to **Standard Resolution**.
- Custom resolution  
Set the width, height and frame rate for the input or output connectors.
- Advanced Settings

Under custom mode, you can select **Advanced** to enable the advanced EDID settings function. The parameters for advanced settings are shown as follows.



Figure 6-11 EDID management



- Import EDID

Click **Browse** to pop up the window where you can select the desired EDID configuration file, and import it for quick configuration.

---

**Notes:**

The system supports simultaneous EDID settings for multiple input and output connectors of the same type and version.

The H\_16xRJ45+2xfiber sending card and H\_20xRJ45 sending card only support custom resolution settings. The VGA, CVBS and SDI connectors do not support resolution and frame rate settings.

---

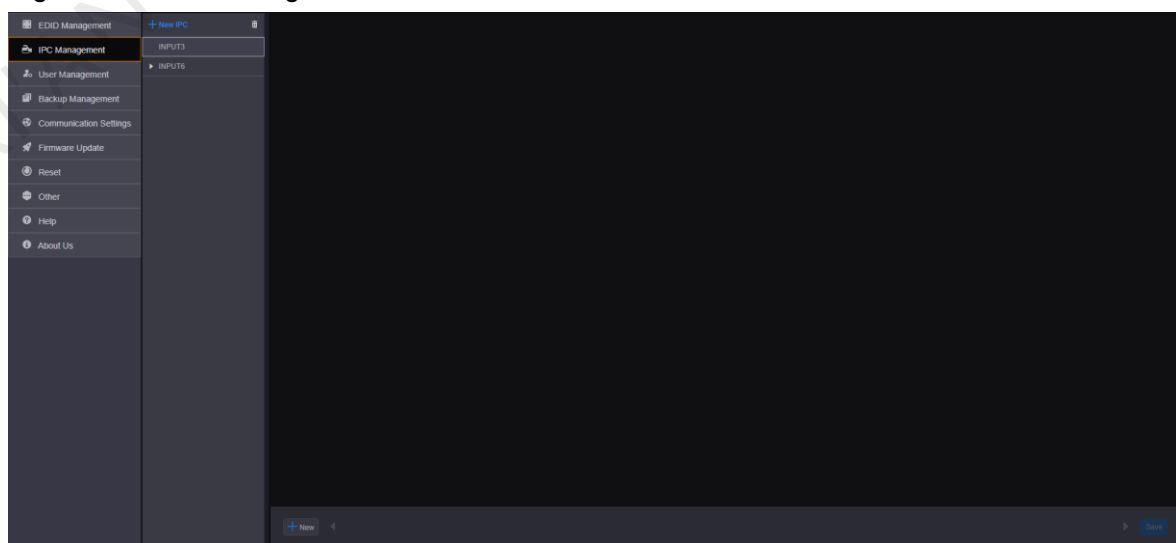
## 6.5.2 IPC Management

When an IP input is accessed, you need to manage and configure the IPC signal source.

### Adding IPC Signal

Step 1 On the **Settings** page, click **IPC Management** on the left to enter the IPC management page.

Figure 6-12 IPC management

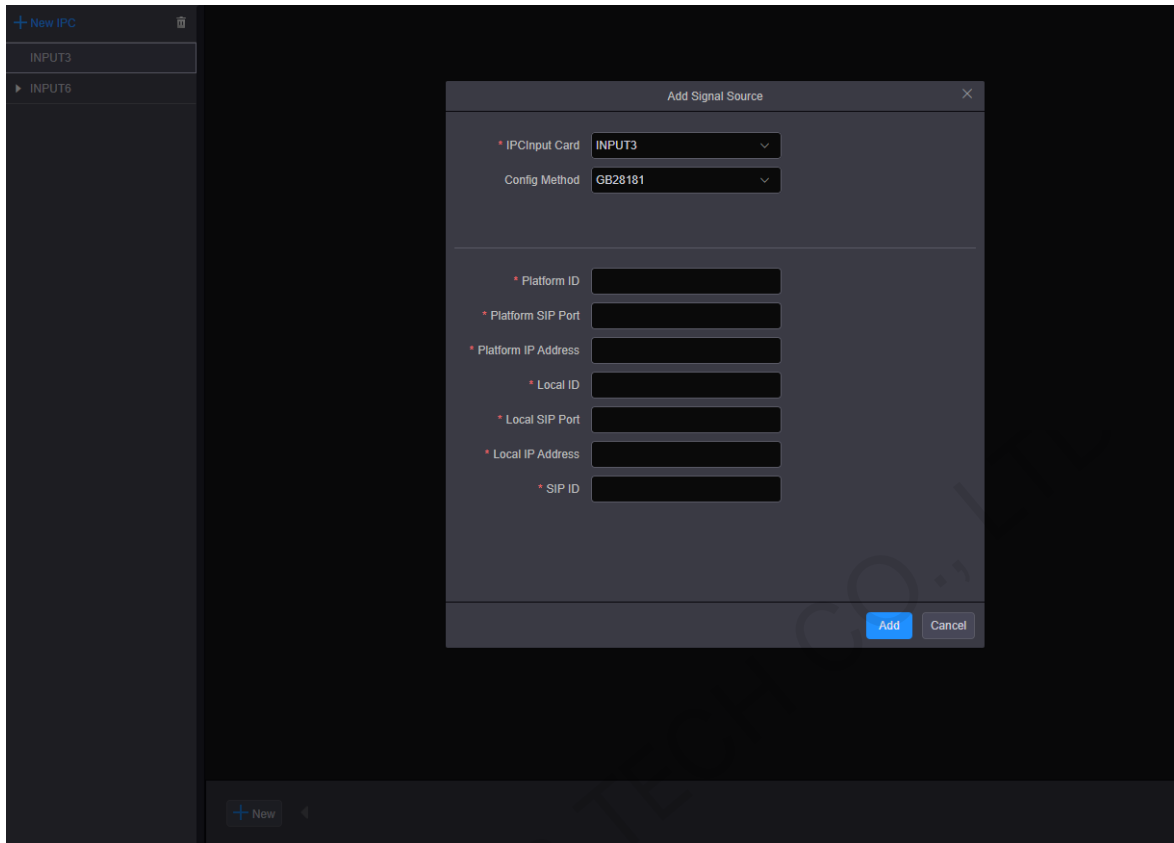


Step 2 Click the IPC card list on the left and select the desired IPC card.



Step 3 Click **New IPC** to add an IPC input source and fill in the related information.

Figure 6-13 IPC card configuration



Step 4 Click the drop-down list next to **Config Method** to select the input source protocol for the IPC card.

GB28181, RTSP and ONVIF protocols are supported currently.

When you select different protocols, you need to check the parameters of the added camera and then fill in the configuration parameters.

- **Config Method - GB28181**

GB28181 is a standard that is widely used in security-related industries, such as police, traffic police and other government projects.

When you set the config method to GB28181, you must obtain the related information of the accessed monitoring system and the IP settings of the device in advance, and then fill the related parameters accordingly on the Web page.

Figure 6-14 GB28181

The screenshot shows a configuration window titled "Add Signal Source". At the top, there is a close button (X). Below the title, there are two dropdown menus: "\* IPCInput Card" with the value "INPUT3" and "Config Method" with the value "GB28181". A horizontal line separates these from the input fields below. There are seven text input fields, each with a red asterisk indicating it is required: "\* Platform ID", "\* Platform SIP Port", "\* Platform IP Address", "\* Local ID", "\* Local SIP Port", "\* Local IP Address", and "\* SIP ID". At the bottom right, there are two buttons: "Add" (highlighted in blue) and "Cancel".

- Config Method - RTSP

Real Time Streaming Protocol (RTSP) is a protocol which provides framework for real-time media data transfer at the application level. The protocol focuses on connecting and controlling the multi-data delivery sessions on lines of time synchronization for continuous media like video and audio.

When you set the config method to RTSP, you must obtain the URL of RTSP service and the matched user name and password in advance, and then fill the necessary parameters accordingly on the Web page.

Figure 6-15 RTSP

**Notes:**

The URL format is [rtsp://IP address: port number](#).

When you select **Add Multiple**, the ports of IP addresses must be the same.

- **Config Method - ONVIF**

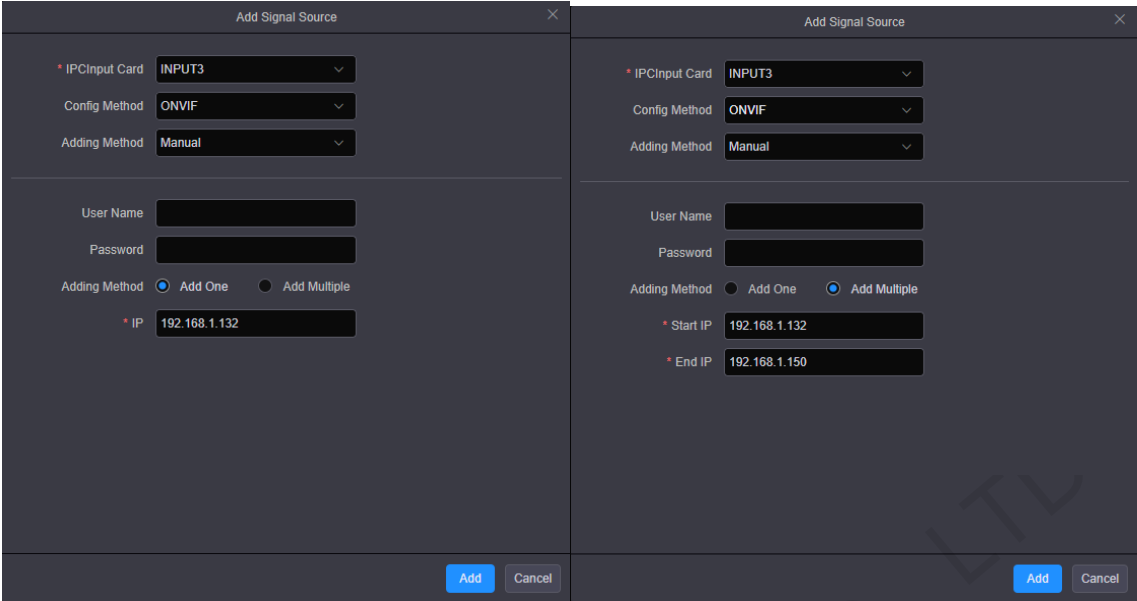
Open Network Video Interface Forum (ONVIF) is a global and open industry forum with the goal of facilitating the development and use of a global open standard for the interface of physical IP-based security products. ONVIF creates a standard for how IP products within video surveillance and other physical security areas can communicate with each other.

When you set the config method to ONVIF, you can select to add the camera information manually or by auto scanning.

- **Manual**

When you set the adding method to **Manual**, you must enter the camera IP address and the user name and password for logging in camera.

Figure 6-16 Adding manually



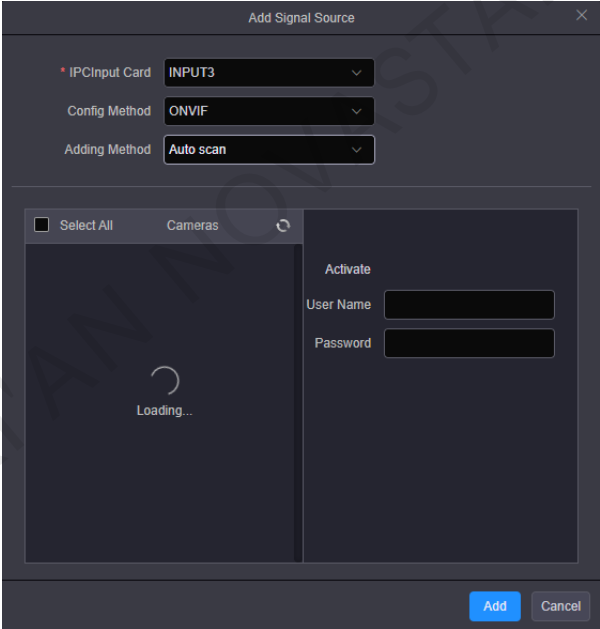
Add One: You must enter the camera IP address and the user name and password for logging in to the camera.

Add Multiple: You must enter the start IP, end IP, as well as the user name and password for logging in to the camera.

- Auto scan

When you set the adding method to **Auto** scan, the system will scan all the cameras on the current network segment and list them. You can select the desired cameras to add them as the video sources.

Figure 6-17 Auto scan

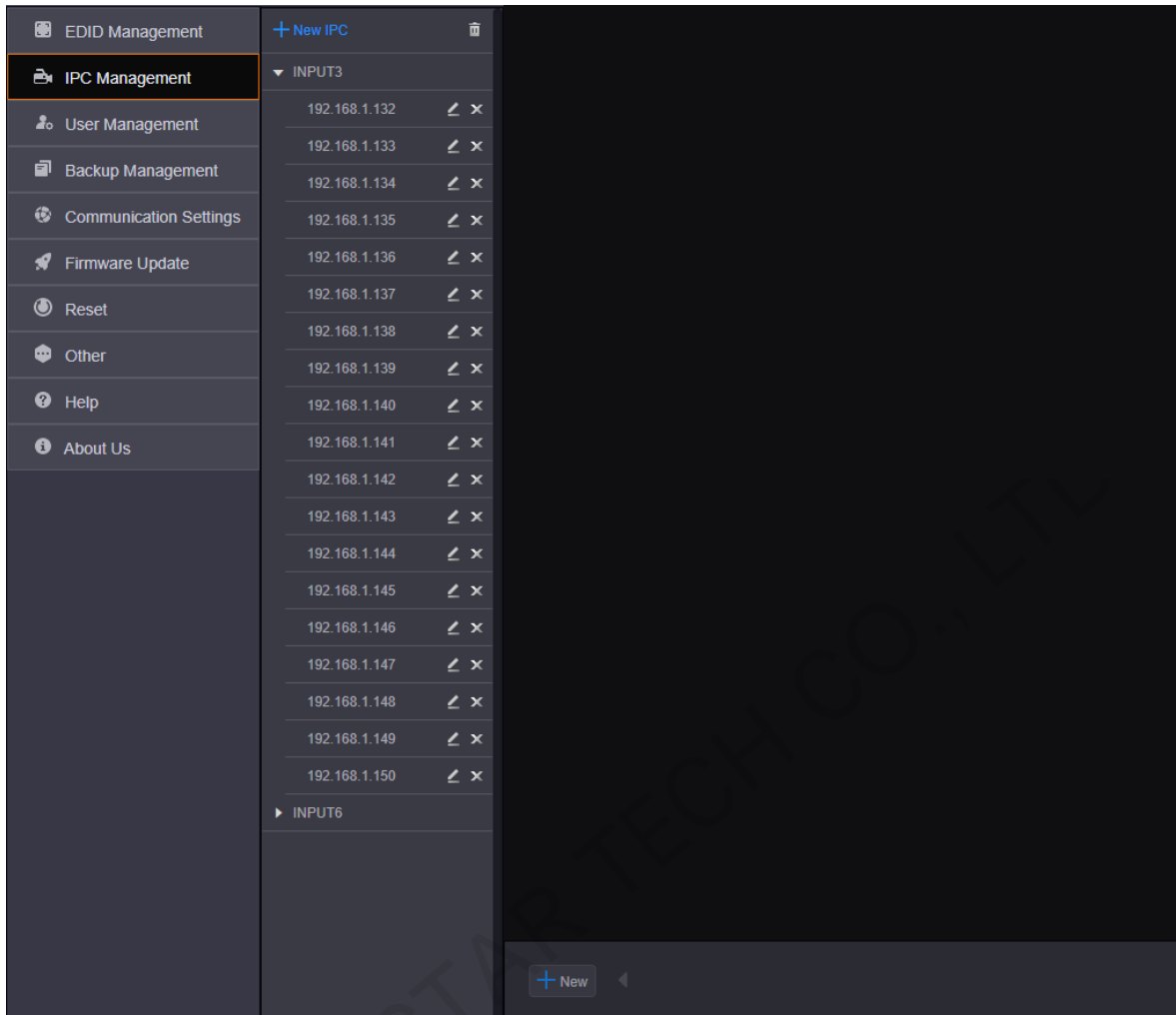


Check the boxes in front of the cameras to select the desired cameras.

Step 5 Click **Add** to complete adding the cameras.

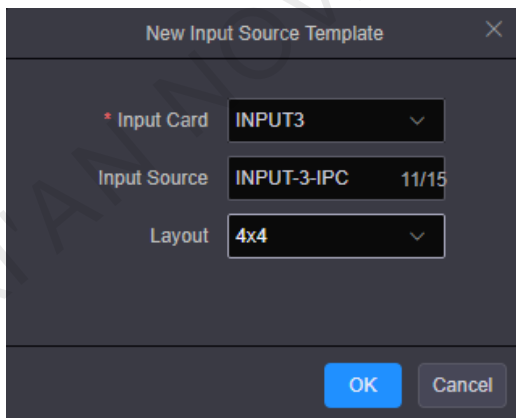
After the video sources are added successfully, the cameras and their IP address will be listed on the left.

Figure 6-18 Adding completed



Step 6 Click **New** at the bottom to create a new input source template.

Figure 6-19 Creating input source templates



Step 7 Click the drop-down arrow next to **Input Card** to select a desired IPC card slot.

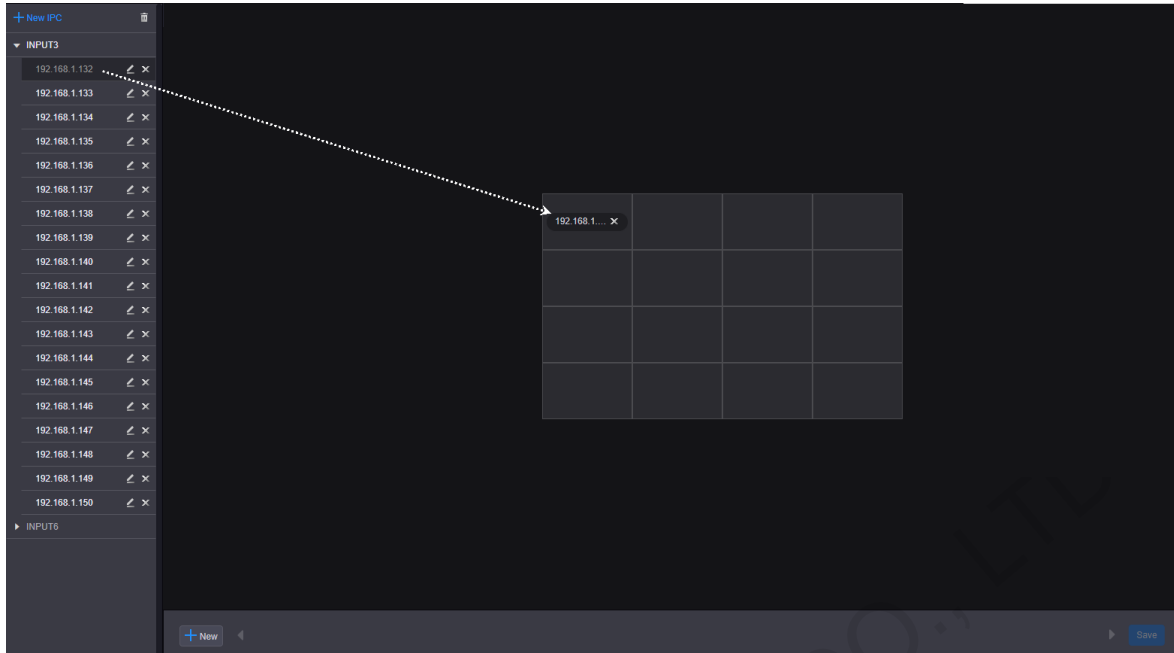
Step 8 Enter the input source name in the text box next to **Input Source**.

Step 9 Click the drop-down arrow next to **Layout** to select the desired mosaic layout.

The mosaic options include 1x1, 2x2, 3x3 and 4x4.

Step 10 Click and drag a source on the left to the input source template.

Figure 6-20 Adding input sources



Step 11 Click **Save** at the bottom right to save the configuration.

At this time, the IPC signal sources are displayed in the IPC signal list with the names you have set in Step 9. If the **IPC Mode** is set to **Auto**, the signal sources are displayed in the IPC signal list with their IP addresses. You can rename the IPC signal by referring to the following section.

### Renaming IPC Signal


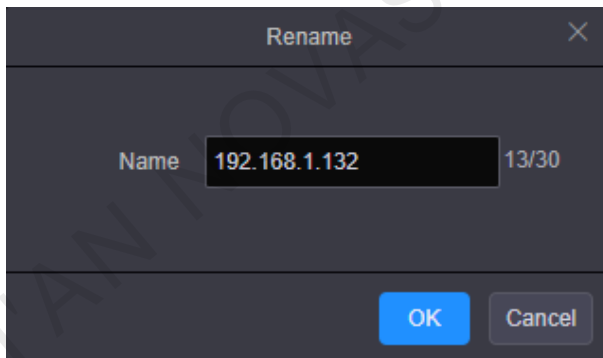
After an IPC signal is added, it is named after the IP address by default. You can click  next to the IPC signal name to rename the signal.


Figure 6-21 Renaming IPC signal



In the text box next to **Name**, give the IPC signal an appropriate name that supports up to 30 characters.

### Deleting IPC Signal

- Deleting Single

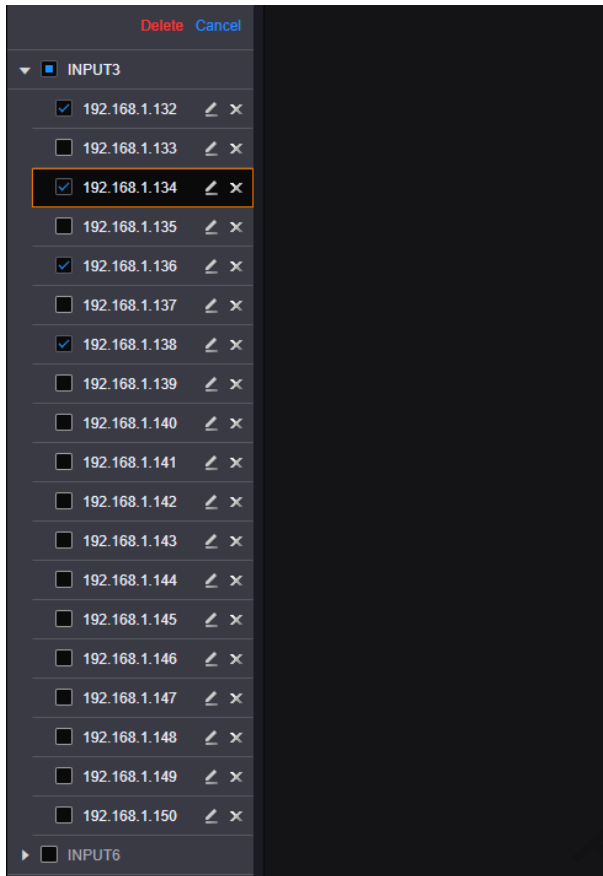
When you want to delete a single IPC signal, click to select the desired signal and click  to delete it.

- Deleting Multiple

Step 1 Click  at the top right of the IPC signal list.

Step 2 Select the desired signal sources by checking the boxes in front of them.

Figure 6-22 Deleting multiple IPC signal



Step 3 Click **Delete** on the top right of the signal list to delete the selected signal.

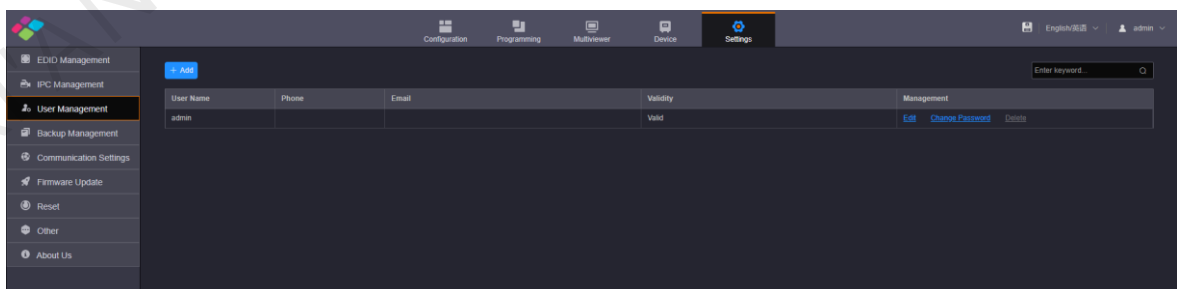
**Note:**

The signal that is being used cannot be deleted.

### 6.5.3 User Management

The H series supports multi-user collaboration at the same time. Only one user (admin) is created in the system by default. If multiple users are required, refer to [4.11 Managing Users](#) to add new users.

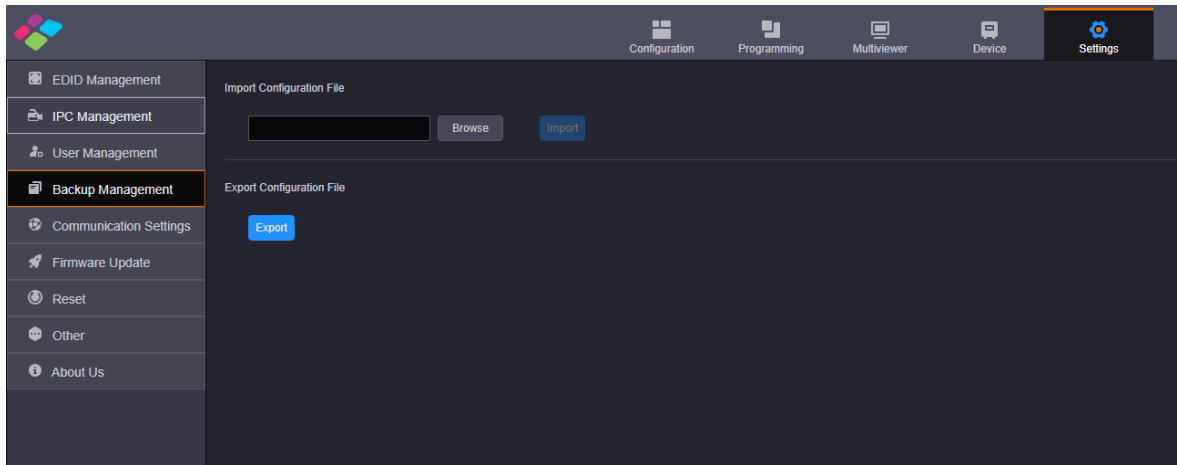
Figure 6-23 User management



### 6.5.4 Backup Management

Click **Backup Management** on the left to enter the backup management page. You can save and export the configured device parameters as a configuration file for future use.

Figure 6-24 Backup management

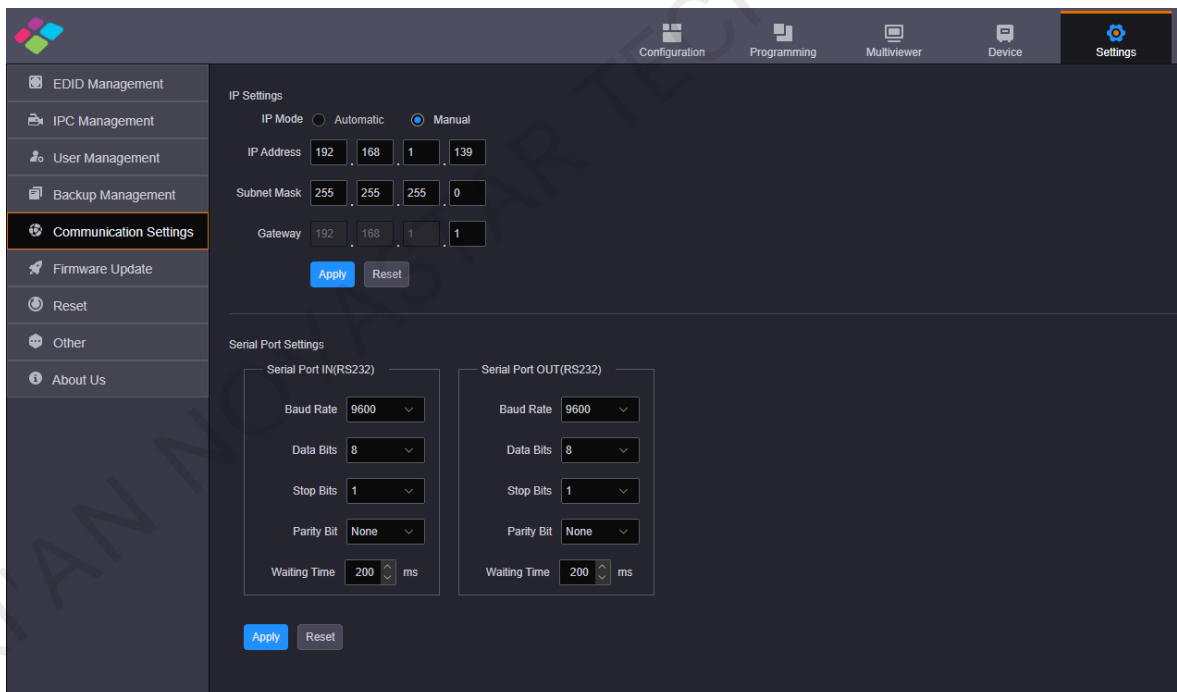


- Import Configuration File: Import the saved configuration file for quick screen configuration, color, EDID, layer, BKG, OSD, preset and preset playback settings.
- Export Configuration File: Click **Export** to export the device configuration parameters for future use.

### 6.5.5 Communication Settings

Click **Communication Settings** on the left to complete the IP address and serial port settings.

Figure 6-25 Communication settings



#### IP Settings

The IP address can be set manually or automatically.

It should be noted that the IP addresses of both the device and control PC must be on the same network segment, and the device IP address cannot be the same as that of the control PC. For example, if the IP address of the control PC is 192.168.0.100, the device IP address must be 192.168.0.X and the "X" cannot be 100.

The subnet mask and gateway of the device must be the same as that of the control PC.

#### Serial Port Settings

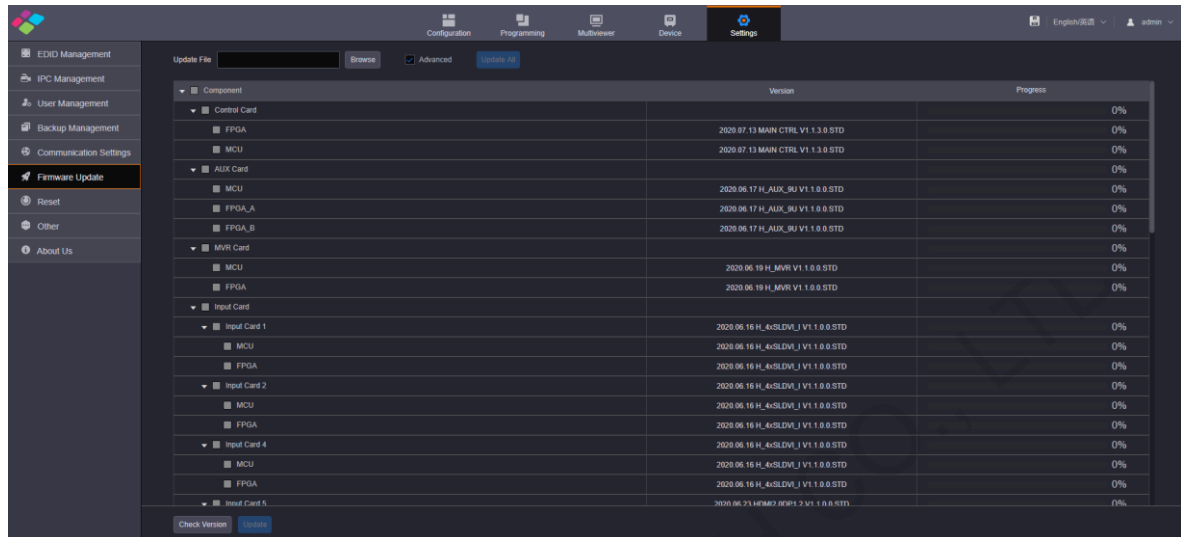
Set the serial port related parameters for a better connection with the central control device and device control through the central control device.



## 6.5.6 Firmware Update

The H series supports firmware update through the Web page. Make sure you have downloaded the update package from NovaStar's official website before the update. The system supports the update for the control card, AUX and MVR cards, input cards and output cards. You can select to update a single component or the whole unit.

Figure 6-26 Firmware update



The update procedure is as follows.

- Step 1 Firstly, make sure you have downloaded the software package of the component to be updated from NovaStar's official website.
- Step 2 Click **Firmware Update** on the left to enter the update page.
- Step 3 Click **Browse** to select the location of the version to be updated in the pop-up dialog box.
- Step 4 Click **Update All** to update the components of the software in the current software package automatically.

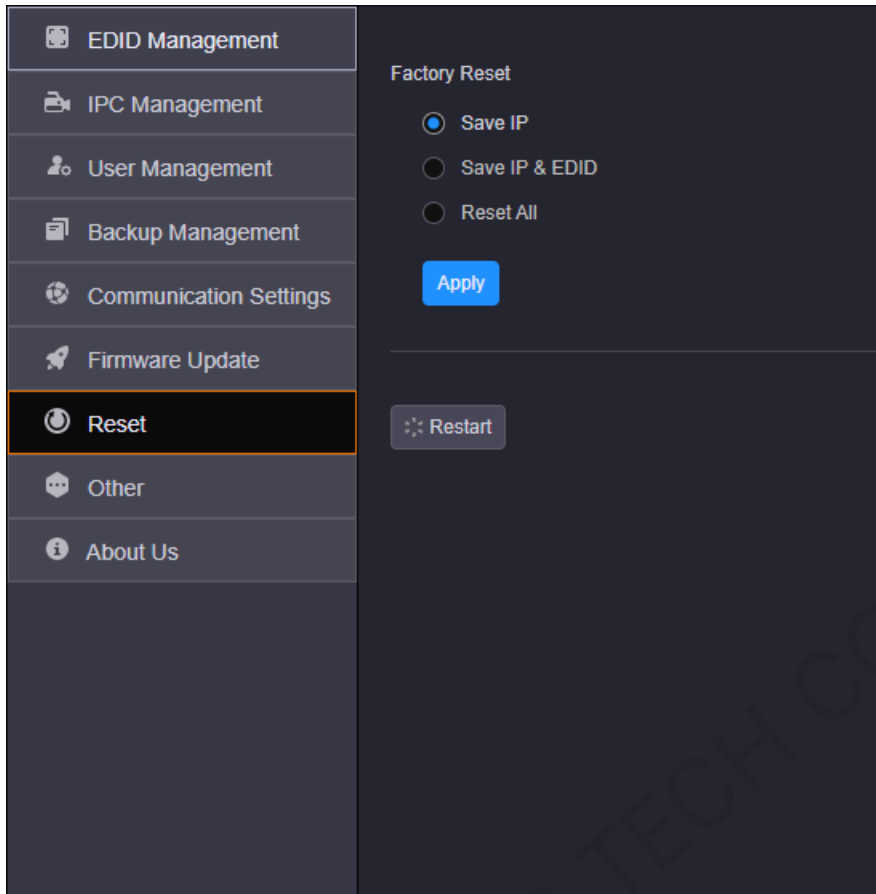
### Advanced Update

- Step 1 Firstly, make sure you have downloaded the software package of the component to be updated from NovaStar's official website.
  - Step 2 Click **Firmware Update** on the left to enter the update page.
  - Step 3 Click **Browse** to choose the location of the version to be updated in the pop-up dialog box.
  - Step 4 Select **Advanced** to enter the advanced update page.
- The system will select the corresponding components according to the software in the current software package automatically.
- Step 5 You can deselect the unwanted components.
  - Step 6 Click **Update** to update the selected components.
- Click **Update All** to update the components of the software in the current software package automatically.  
Click **Check Version** to view the component versions.

## 6.5.7 Reset Settings

You can reset the device configuration data to factory defaults.

Figure 6-27 Reset



### Factory Reset

Select the desired reset mode and click **Apply**.

- Save IP: Reset all the parameters to factory defaults, except the device IP address.
- Save IP & EDID: Reset all the parameters to factory defaults, except the device IP address and EDID.
- Reset All: Reset all the parameters to factory defaults.

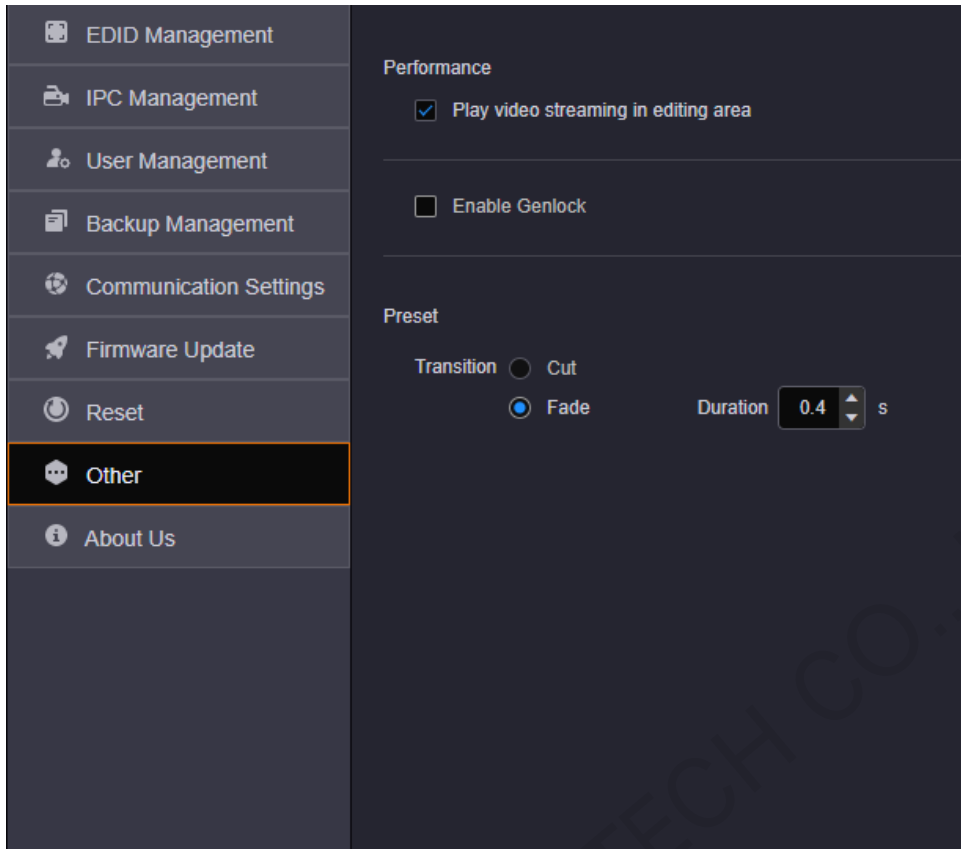
### Restart

Click **Restart** and the device will restart automatically.

### 6.5.8 Other Settings

On this page, you can set the performance, Genlock and preset transition.

Figure 6-28 Other settings



### Performance

Set whether to play the video streaming of the layer in the editing area. Turn off this function for quicker layer configuration.

### Genlock

Enable or disable the Genlock function.

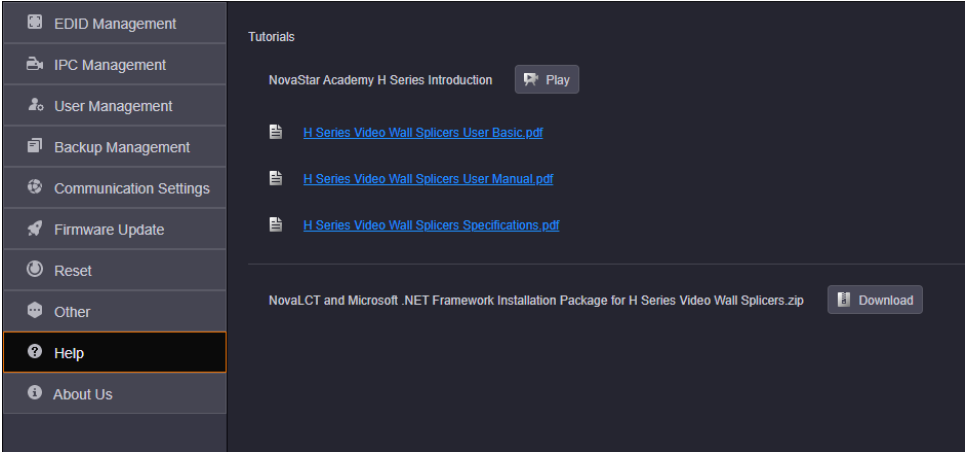
### Preset

Set the preset transition effect. Cut and fade effects are supported. When **Fade** is selected, the transition duration can be set.

### 6.5.9 Help

View the documents provided to help you, such as tutorials, manuals and related installation packages.

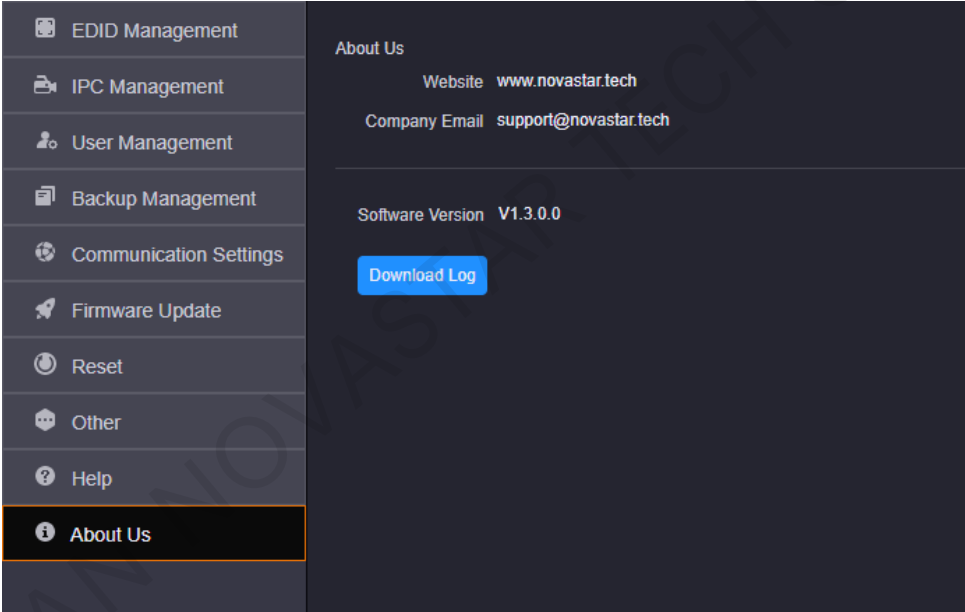
Figure 6-29 Help



### 6.5.10 About Us

On this page, you can view the information such as the official website, email address and device version. Click **Download Log** to download the device operation log. When the device fails, you can download the log and send it to your device manufacturer for analyzing problems and offering suggestions to fix the problems.

Figure 6-30 About us



**Copyright © 2020 Xi'an NovaStar Tech Co., Ltd. All Rights Reserved.**

No part of this document may be copied, reproduced, extracted or transmitted in any form or by any means without the prior written consent of Xi'an NovaStar Tech Co., Ltd.

**Trademark**

**NOVA STAR** is a trademark of Xi'an NovaStar Tech Co., Ltd.

**Statement**

Thank you for choosing NovaStar's product. This document is intended to help you understand and use the product. For accuracy and reliability, NovaStar may make improvements and/or changes to this document at any time and without notice. If you experience any problems in use or have any suggestions, please contact us via the contact information given in this document. We will do our best to solve any issues, as well as evaluate and implement any suggestions.

[Official website](http://www.novastar.tech)  
www.novastar.tech

[Technical support](mailto:support@novastar.tech)  
support@novastar.tech